



“ Passion
for milling
since
1954 ”



Your
GLOBAL solution
PARTNER
for advanced milling technology.



GRUPPO ALAPALA

Our Founder	6 - 7
Chairmans Message	8
A Message From The Vice Chairman Of The Board	9
Timeline	12 - 13
Why Alapala	14 - 15
Corporate Philosophy	16 - 17
Corporate Profile	18 - 19
Field of Activity	22
Group Companies	23
Production	24 - 37
Engineering	38 - 39
Automation	40 - 41
R&D	42 - 43
After-Sales/Services Support	44 - 45
Project Department	46 - 48
Services Provided	49
Products	50 - 51
New Generation Products	52 - 53
Alapala Construction	54 - 57
DEPART	58 - 59
Grain Storage Systems	60 - 61
Alapala in the World	62 - 63
Reference Projects	64 - 93
Alapala in Press	94 - 99

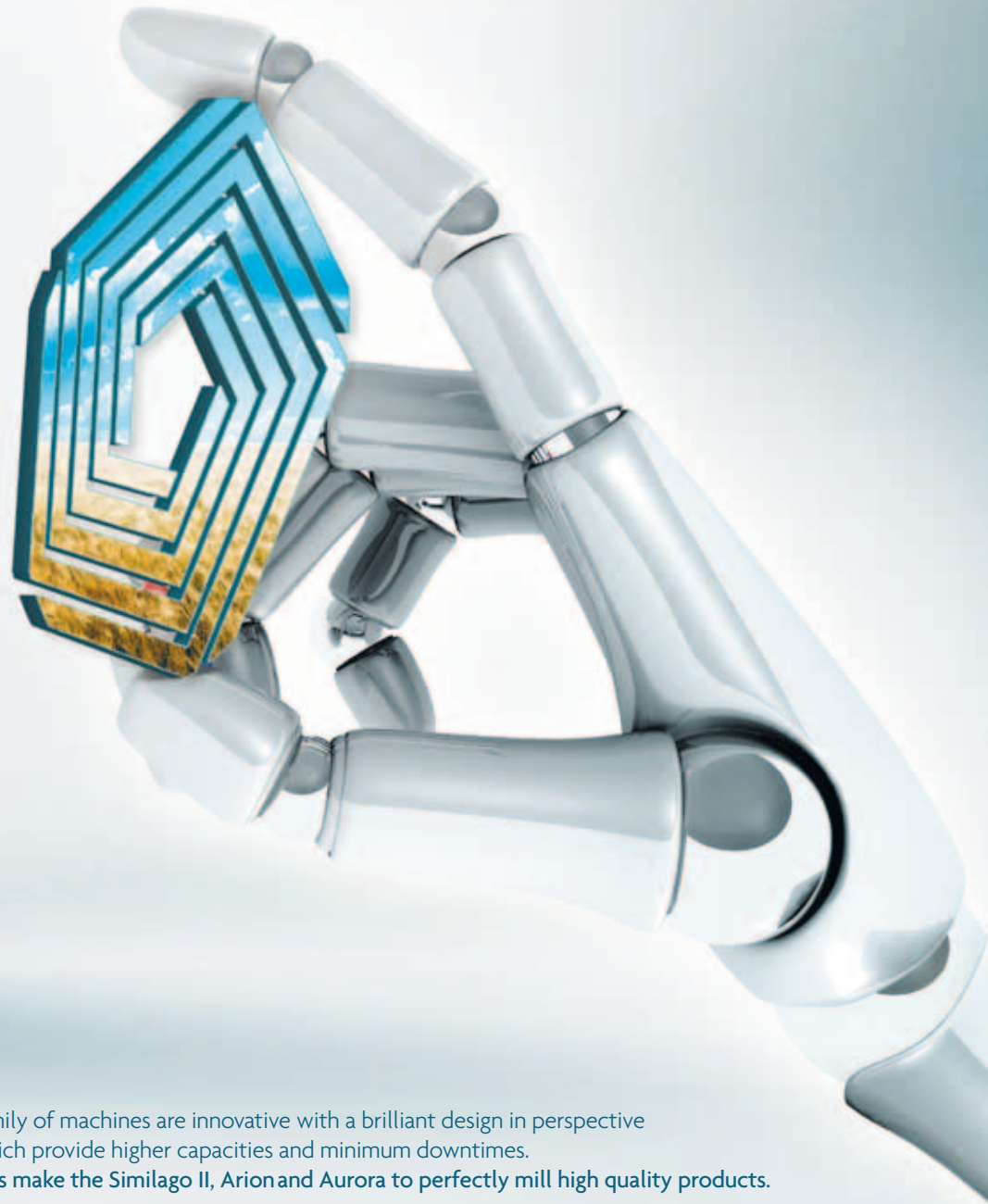
ALAPALA'S NEW STATE OF THE ART MILLING TECHNOLOGY



ARION PURIFIER

SIMILAGO II

AURORA PLANSIFTER



Alapala's new state of the art family of machines are innovative with a brilliant design in perspective of the aesthetics which provide higher capacities and minimum downtimes. The extraordinary advantages and capabilities make the Similago II, Arion and Aurora to perfectly mill high quality products.



“our founder”

“Mehmet Alapala who adopted integrity, hardworking and perfection as his principle became a 'treasure' leading next generations after him.”



He started his working life in late 1930s at a very young age with his father Abdullah Alapala by building wooden construction parts. Years later he founded his own carpenter's manufactory with his brother Mustafa Alapala and became a carpenter. Mehmet Alapala was actively involved in construction of Hatap Flour Mill built in Çorum in 1961 by a British manufacturer named Simon.

That experience started a new era for both Mehmet Alapala and generations to come. Milling machines were being made of wood during those years. Mehmet Alapala started manufacturing plansifter used in flour mills thanks to his experience gained during such works. He commenced selling sifter to all factories in Turkey very shortly because he gave much importance to quality and worked very meticulously and he was the only person who did this business in Turkey and then, he laid the foundation of Alapala Machine that succeeded in becoming one of the top companies in its sector all around the world. Mehmet Alapala later, together with his sons Nurettin and İsmail Alapala, started manufacturing all machinery produced in a flour mill and turn-key mills. He started Alapala Feed Mill in 1982 and Çorum Alapala Flour Mill in 1984 laying the foundations for Alapala Group.



“ Chairmans message ”

“ We innovate in order to offer sustainable solutions and technologies which drive the progress of our industry – grain milling, storage and handling.”

Dear Friends,

I appreciate your interest in Alapala and encourage you to explore our catalogue website to learn more about our corporate legacy, our commitment to growth, and our family of products and services worldwide.

Alapala had its humble beginning 61 years ago and today I am happy to inform you that we have grown to be one of the world leaders in our sector. This sustainable growth is based on strong foundations which are innovation, quality, customer and after sales service, corporate governance and qualified and dedicated employees

Population growth and economic development are continually increasing the global demands for improved productivity for agriculture which demands quality post-harvest processing technologies including grain milling

Alapala has a rich history of success in grain milling, and we continue to pursue opportunities for development. Our company vision is strategically focused on customers, technology, quality, employees, social responsibility, environment; and we are proud of our results.

As I visit our customers worldwide, I am proud of the commitment of our teams at every level. Innovations are shared in support of Alapala's culture of continuous improvement and position us to meet the ever growing demand of the world's long-term needs for milled products.

Chairman of the Board,
İsmail Alapala

İsmail Alapala

“
**A message
from the
vice chairman
of the board** „



**“We have a customer and quality oriented organization and structure.
Our objective is to create an environment where both our employees and customers are satisfied.”**

Dear business associates and personnel of Alapala Group,

We live in a world of constant change. Old technologies are replaced by the new ones. Such changes continuously lead you to create new ideas. As Alapala Group, we are working sustainability and development oriented manner. In this process, we never concede quality and customer satisfaction. Our devoted and effective human resources, powerful and technological infrastructure and passion for work have moved Alapala Machine to become one of the world's biggest companies in its sector.

During the 60 years of our business life we have kept our goals at maximum and will continue in this manner. We will always provide the best product and services to our customers through our employees who have creativity, corporation and perfectionism as their principle. We will also continue to introduce Alapala quality to different markets by adding new references to our already existing ones in more than 85 countries along with our international alliances.

Vice Chairman of the Board,
Görkem Alapala





NEW GENERATION SIMILAGO II

A PERFECT EVOLUTION OF TECHNOLOGY.



“

timeline ”

1954

Founded by Mehmet Alapala, Alapala Machine initially started by manufacturing wooden plansifters.

1969

Its starts installation of turn - key flour mills.

1986

Alapala Machine becomes a joint - stock company.

1990

Alapala establishes its research and development department.

1967

The plant started to manufacture other machinery used in flour and feed mills by utilization of new technologies.

1981

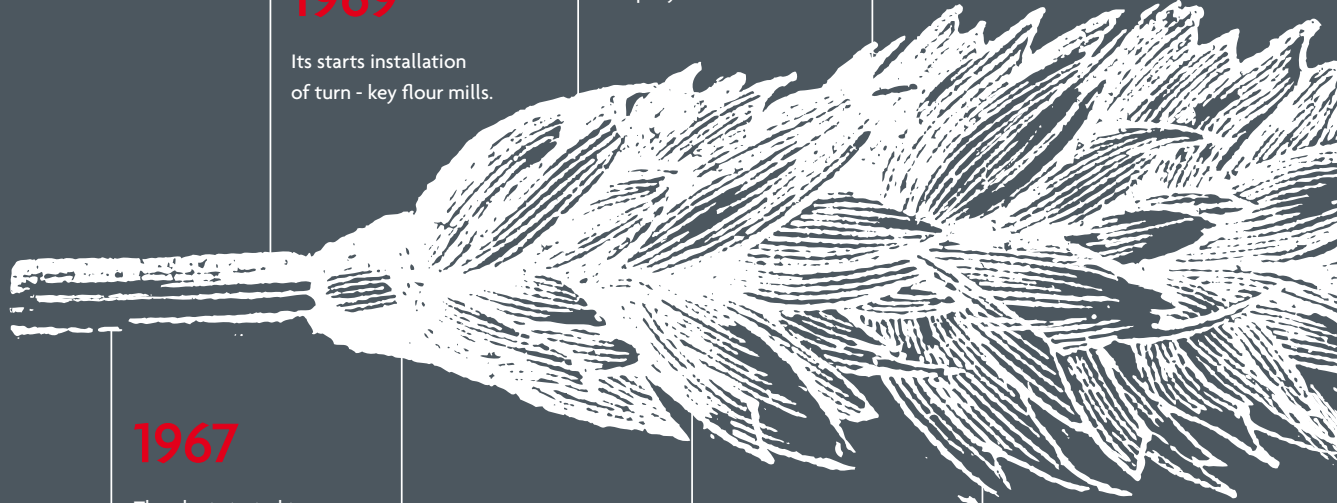
Alapala makes its first exports. (Yugoslavia)

1989

Alapala makes its first turn-key flour installation abroad. (Jordan & Italy)

1991

Alapala establishes its first turn - key feed mill abroad.



1993

Alapala sets up its in-house automation unit.

1995

Alapala starts manufacturing facilities of new-generation roller mills.

2004

Alapala's sales and marketing department moves to Istanbul.

2012

Alapala has established a new plant for production of sieve box.

1994

Alapala moves to its new plants with 16.000 m² indoors area, where the latest technologies and the newest machinery and equipment are employed.

1995-2003

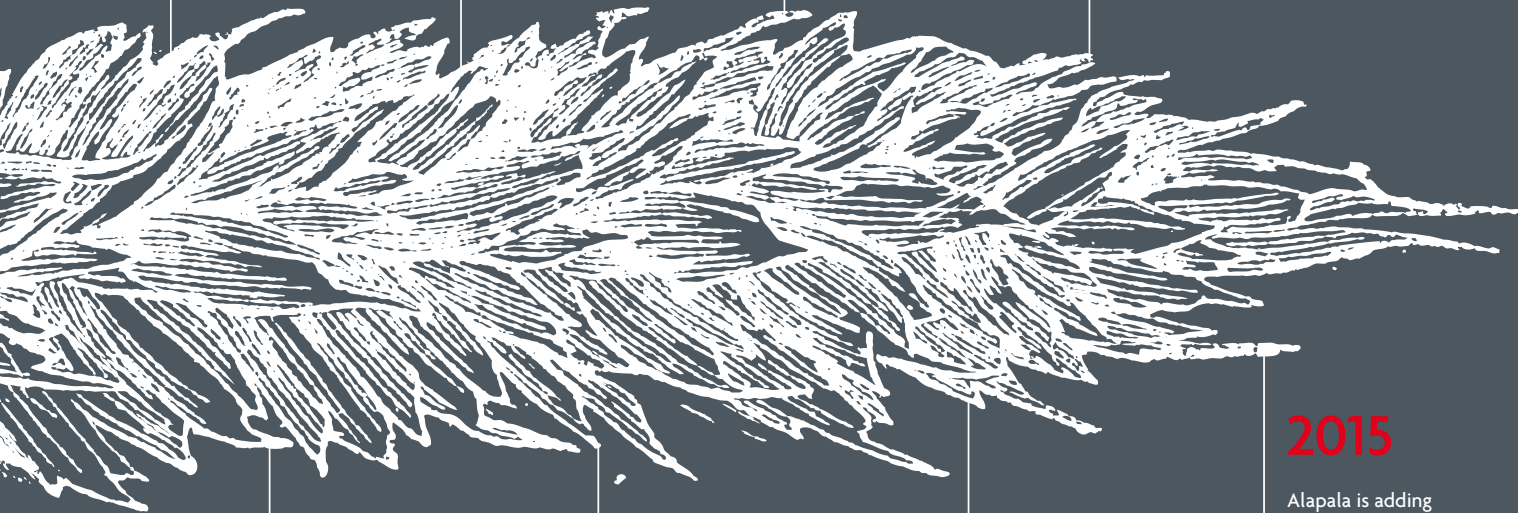
Installation of mills at a capacity of 500t/day and over and manufacturing of new-generation machinery. It grants dealerships and opens liaison offices.

2008

After 2 years of R&D, Alapala's new-generation roller mill "Similago" enters the market..

2015

Alapala is adding a high technology manufacturing plant over 30.000 square meter indoor area to her existing 20.300 square meter indoor area



To combine future technologies with today's business ideas,
Meet Alapala's expertise.



“

why alapala ? ”

- Alapala is one of the two largest companies of the world in milling sector. Alapala has superior technological infrastructure, experienced staff and 60 years of experience.
- Alapala has successfully completed hundreds of turnkey projects to one of the developed country Germany and to over than 85 countries including France, Belgium and USA.
- Due to its economical solutions, Alapala is always providing high quality machines with most affordable prices to its customers.
- Wide spare parts stock, powerful service network and fast service ensures Alapala to win the approval of its customers.
- Thanks to its research and development, it adopts all the innovation to its products.
- With energy saving machines, Alapala contributes its customers with their cost savings.
- Alapala is an expert company in building flour, feed, semolina mills, grain storage systems and industrial steel buildings.
- Quality is indispensable for Alapala. The most two important key factors for Alapala's success are perfectionism and customer satisfaction orientation.



“

corporate philosophy ”

Our reason of existence

To be a solution partner
boosting the value
of partners’
investments and
increasing their
competitiveness.

Our goals for tomorrow

To become an engineering
and machinery production
brand growing continuously
with tis foreign partners,
acknowledged as a hub
of information with its
know-how in flour milling
Technologies and globally
recognized with its turnkey
projects.

Our values

- Innovation
- Reliability
- Customer orientation
- Solution orientation
- Sensitivity to human and environment
- Continuous quality policy in each field
- Fast and planned
- Team spirit



“ corporate profile ”

“

a SUCCESS

Founded in 1954, Alapala Machine is the oldest and the most well-known company of the Alapala Group. It takes its place among the leading companies of the world in its sector, with a vision to be the leader.

story ”

Alapala Machine builds turnkey plants of any desired capacity and is one of the top 500 exporters in Turkey, exporting 95% of its production. It has a considerable number of turnkey references in over 85 countries in all the 4 continents including developed and industrial countries such as Germany, France, Italy and U.S.A.

It provides best pre-sales and after-sales services with its staff of highly specialized staff in the industry and strong overseas representation which includes strong service networks and spare-part stocks. Alapala manufactures high quality, high performance machinery which are manufactured in a state of the art production facility with the most advanced CNC machinery.

Alapala supply program:

- ▶ Flour Mills - soft, hard and durum wheat
- ▶ Maize mills
- ▶ Rice mills
- ▶ Feed mills
- ▶ Silos and storage systems for all products
- ▶ Weighing, conveying and packaging systems
- ▶ Flour blending systems
- ▶ Port handling facilities
- ▶ Spare parts



NEW GENERATION ARION PURIFIER

PERFECTION BEST DESCRIBES THE ARION PURIFIER.



“fieldofactivity,,

PROJECT MANAGEMENT | SUPERSTRUCTURE CONSTRUCTIONS | FLOUR MILLS

SEMOLINA MILLS | FEED MILLS | MAIZE MILLS | RICE PROCESSING PLANTS

GRAIN STORAGE SYSTEMS | TRANSPORTATION, LOADING AND UNLOADING EQUIPMENT

“group companies”



Alapala Group is acting in 4 sectors including industry, food, foreign trade and construction, with 8 different group companies.

Alapala is continuously growing with its experience exceeding 60 years, superior technological infrastructure, visionary management, perfectionist and dynamic staff and its development policy along with its foreign investment partners.



ALAPALA MACHINE INDUSTRY AND TRADE INC.



MULINO FLOUR MILLING - UKRAINE



ALAPALA FLOUR MILLING AND TRADE INC.



MILL PROJECT MONGOLIA



ALAPALA CONSTRUCTION AND TRADE INC.



ALAPALA FEED MILLING AND TRADE INC.



ALAPALA FOREIGN TRADE INC.



SPARE PARTS INC.

Alapala always offers the best solutions for economy and ecology.



“production”

“
Our aspect
separating us
from other
firms beyond
production is
adding value and
benefit to life.
”

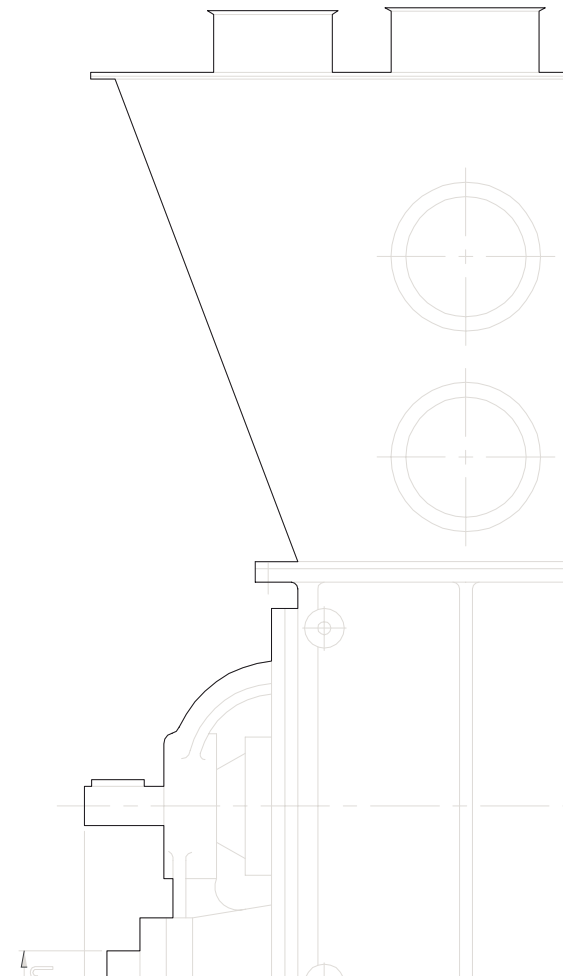


“not only the product we also produce quality”

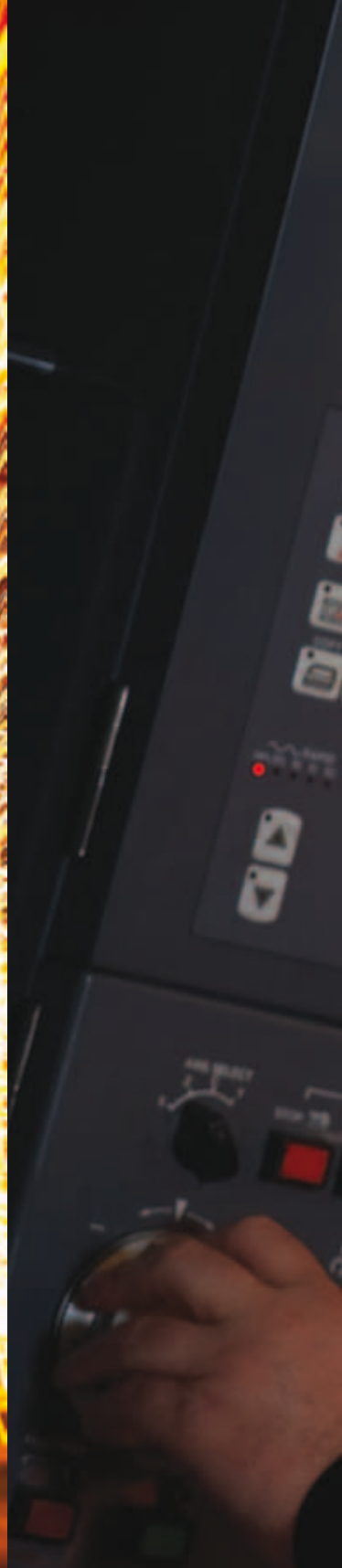
One of the outstanding features of human being is the ability to produce.

The feature distinguishing Alapala from other companies is, that we accept production not only as output, but also as a facility to add value and benefit to our life comfort. In Alapala, we interpret manufacturing process in this manner and produce not only a product but also quality, from the beginning until the end of this process.

Our manufacturing department consisting of 16 units including storehouses of raw materials and semi-finished products, sharing and bending, machining, welded and bolted connection pre-dyeing processes; dyeing, assembly, test and packing lines, post-dyeing processes, serving on 50.300 m² ground, always works to create the best product, shedding light to the future.

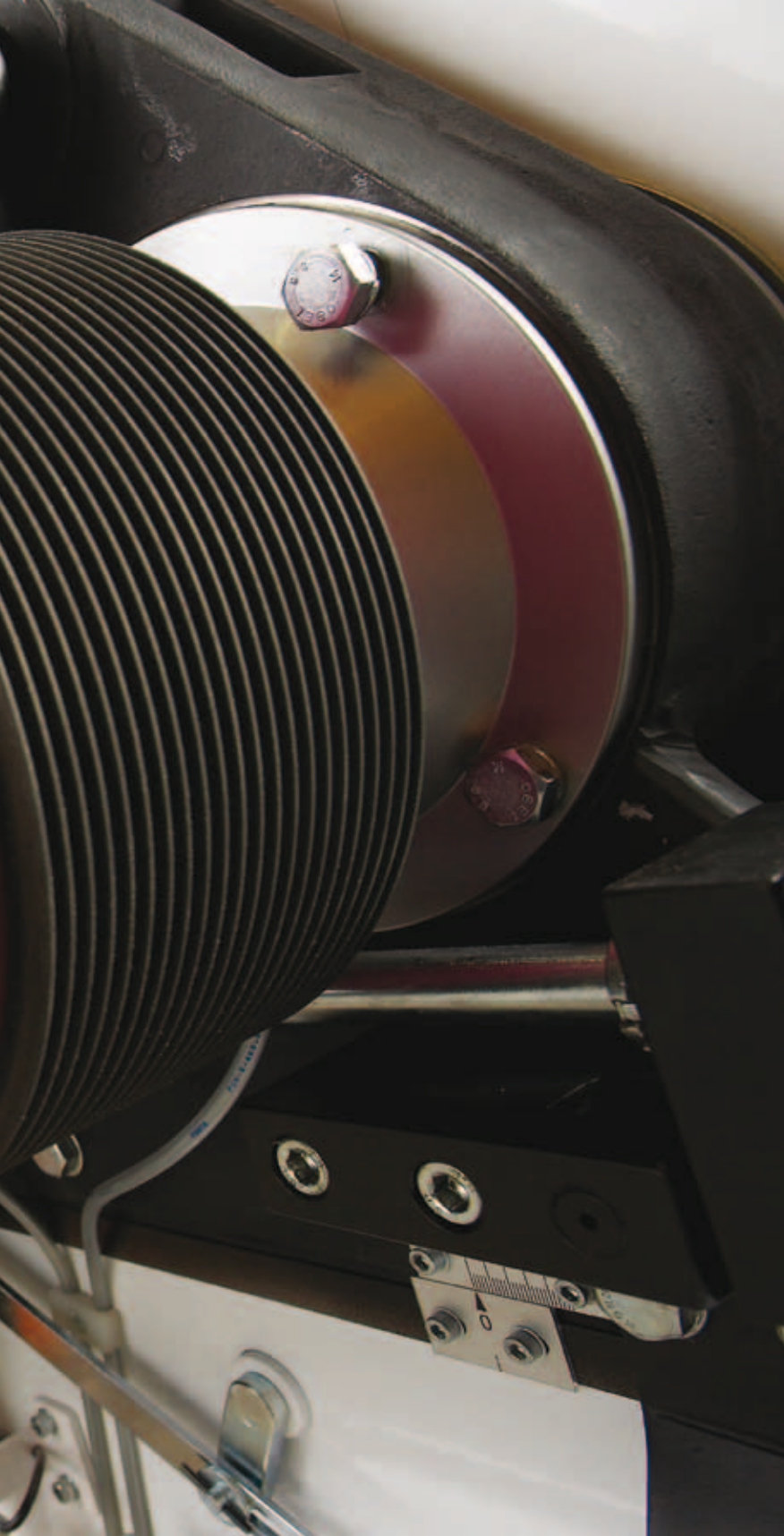
















In order to provide the best service to our customers, we do our job perfectly.

Alapala Team constituted of engineers, technicians, operators and project experts accurately carry out turnkey plant establishment and machine production.

As in all corporate companies, Alapala's business philosophy is based on production professionalism and systematic working discipline. Orders are sent from the Marketing Department to the Process Department where they are classified. After the Planning Department distributes these orders to the relevant departments, required preliminary work will be done and our experts realize the demands of our customers.

Production department and equipment warehouse managers constantly control the stocks and production units, reflecting their knowledge and skills in production.

If the order placed is over a single machine group, production stage is simply and quickly started. Detailed project orders are produced in coordinated cooperation of the personnel working on the project and management.







We thoroughly follow all controls in all stages

Quality controls during and after production are carried out at certain control points in various plants that need raw material.

Thus, raw materials at the stage of production are assembled before painting. All removable parts are assembled and labeled before being painted.

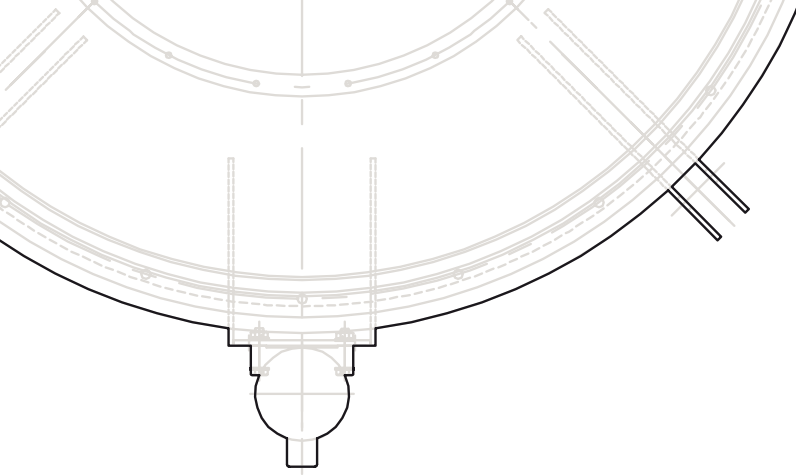
All machines are reassembled and taken into packaging area after tests and controls in quality control unit required for shipment are completed and final control forms are filled.

Depending on whether the machines are transported by road or shipped by sea, maximum protection measures against wear are taken the machines are packed and shipped accordingly. Our well trained personnel assemble the machines on the site in accordance with the project and prepare the machines for use.

“engineering”

“
We believe
that creating
a difference is
important...”
”





“engineering solutions everywhere „

Operation of a production plant or a mill at high performance depends on the power and of the machinery used along with efficient use of space.

Machinery suitable for the required capacity should be selected, most appropriate location should be chosen aesthetically and details required for design and production of other equipment should be provided.

We produce tailor made solutions for you in our process department in order to achieve the highest performance in your mills.

After the selection of models appropriate for the required capacity, we realize the most ergonomic layout along with alternatives using Solid modeling, CAD and animation software. During the mill assembly we continuously carry out visual audits so that the assembly is in compliance with the project.

As a company that is aware of the fact that the quality concept is not only the standard of production and product, that acts under the philosophy of service focused on customer satisfaction, we ensure that our staff milling process professionals have sufficient experience and know how in our sector and follow and implement global developments.

Project and Process Management

Expert professionals within the organization of Alapala are offering turnkey plant solutions in different options according to the demands of customers.

Timing

When our professional engineers conduct their studies either during project designing or in all processes, they continue their studies in a planned manner and in line with the production according to the schedule requested by our customers.

Mill Design

When our engineers design the plant (mill), they prepare detailed flow charts of each section and for this purpose; our expert team use the latest technology drawing software. We are engaged in not only machine but also buildings. Based on customer demand, Alapala produces joint solutions for its customers in cooperation with professional experts, civil and construction engineers and manufactures steel buildings.

Optimum Solutions

Alapala approaches the projects so that it develops engineering solutions which enables customers to get the capacity and efficiency they need with minimum machines.

“automation”

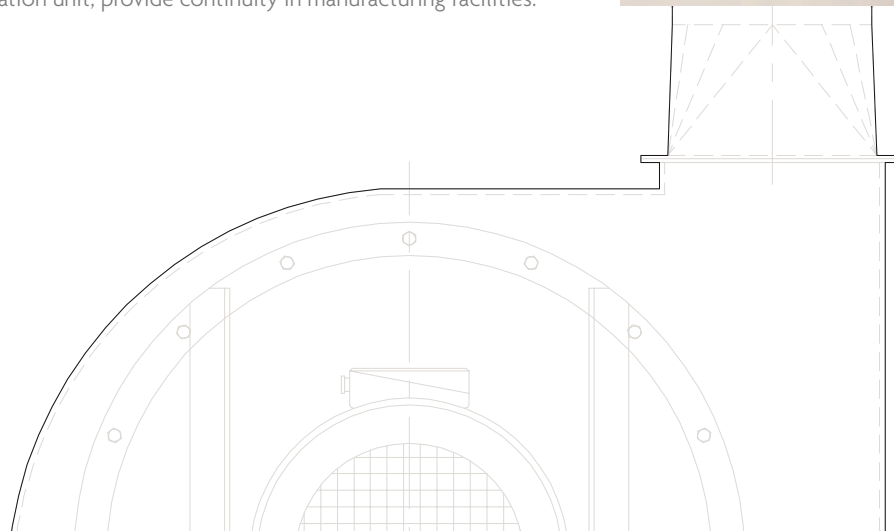
“
The most
important factor
that places us
on the top is the
quality of our
service.”





Among the most important factors letting us reach the top is our organization that can support the weight of the concept of trust in flour and feed machinery industries along with our high-quality services.

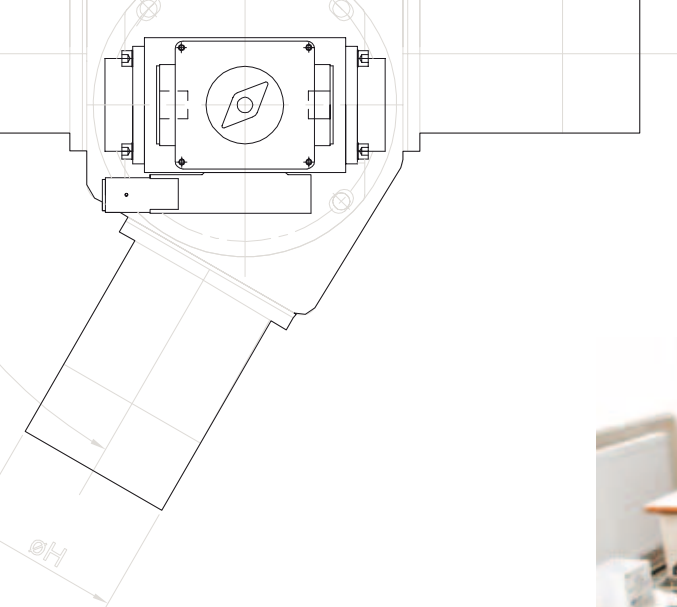
Electricity project drawings of low-tension and compensation systems of flour and feed mills; design and production of MCC panels; design and production of compensation panels; PCL programming and SCADA software; assembly and connection of field cable trays; computer troubleshooting and program installations; set-up and provision, assembly and test of electric and electronic equipment of all manufactured machinery; repair, maintenance and upkeep of atelier electrical faults (such as hand tools, energy transmission lines, CNS and other machine tools etc.), forming only the small part of tasks assumed by our automation unit, provide continuity in manufacturing facilities.



“ r&d ”

“
High quality
cannot be acquired
only by efficient
performance but
continuous research
and development are
essential.
”





In our R&D Department we work on high performance of our machines with minimized maintenance needs and minimum energy consumption.

Our expert engineers continue their intensive studies with state of the art test devices in our laboratories.

Our products are always tested according to conditions of different countries and are launched in the markets according to those criteria.

“after-sales service support”

▶ training

- Detailed training on the operation and maintenance is provided for each machine
- Alapala is providing training either in the plant of customers or in Alapala's facility
- Training is provided by expert personnel

▶ consultancy

Alapala is providing consultancy services both to its own customers and customers of other manufacturers.

▶ spare parts

Quality and effective spare parts management is one of the subjects Alapala gives priority. The main object is to ensure that the plant has minimum down time. Therefore, optimum stock of spare parts is available at any given time with the fastest possible delivery around the world.





► after-sales support

Customer Technical Assistance Center (CTAC)

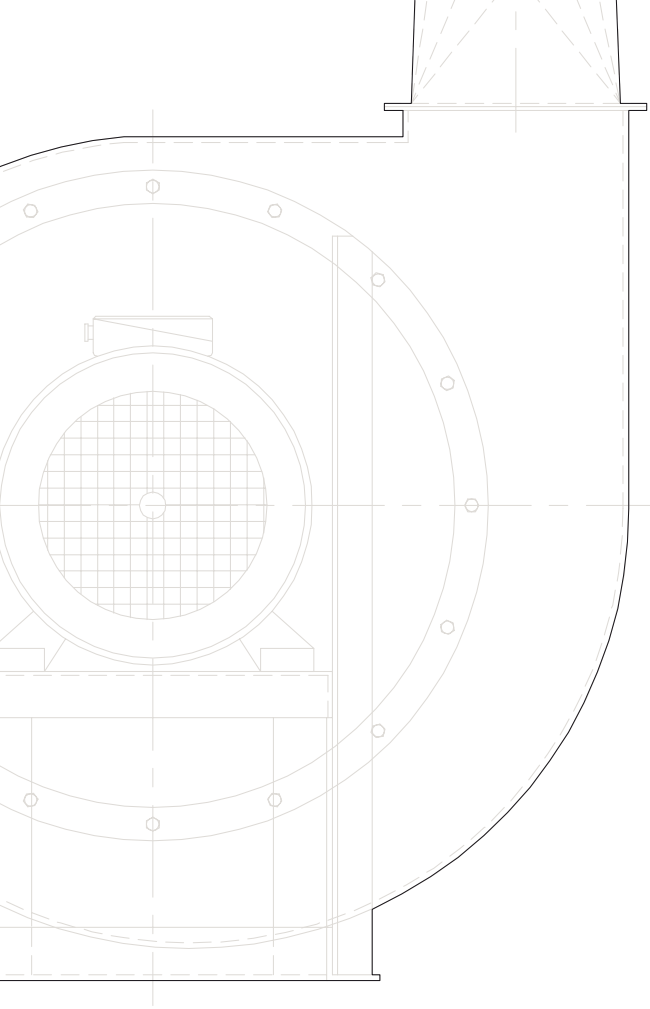
CTAC: "Customer Technical Assistance Center" is an application used by our regional agents and our customers.

Through CTAC they have up-to-date information about changes, solutions and services.

Product Improvement Programs (PIP)

In case there is a notable functional change or safety increasing development on the product, ALAPALA generally announces a PIP - Product Improvement Program.

By applying these programs to machines product quality along with safety are preserved.



“ project department ”

Project Department designs and draws production and introduction images of the machines and equipment produced.

The latest version of CAD programs are used for drawings. The programs used are in coordination with production conditions, purchase, warehouse and planning processes.

It seeks among applicants, whose competencies are eligible for the job definitions; plan and implement required trainings for the future.

It pays attention to customer complaints and satisfaction values.

It carries out revision, production follow-up, recording, archiving and performance assessment processes to maintain a controlled and improved system.



► Milling process department



Mill process department designs and draws mill process images of flour and feed factories that comply with building and capacity.

It offers customers alternative production processes suitable for production demand and target.

It visualizes production processes by drawing flow charts.

It prepares building hole plans and the lists for minimum necessary machine and equipment with maximum efficiency for the flour/feed factory decided by customer.

It makes necessary compliance inspections during production, shipment, installation and commissioning processes and ensures the committed quality, productivity and satisfaction by staying in touch with customers all the time.

The latest version of CAD programs are used for drawings. Those programs used are in coordination with production conditions, purchase, warehouse and planning processes.

It seeks among applicants, whose competencies are eligible for the job definitions; plan and implement required trainings for the future.

It pays attention to customer complaints and satisfaction values.

It carries out revision, production follow-up, recording, archiving and performance assessment processes to maintain a controlled and improved system.

➤ Work planning process

Work planning process ensures that annual work schedule is prepared in line with the plant projects and prepares the activities of project and work order details, makes required purchase warnings by considering raw material stocks and directs to production according to its priorities and keeps related records.

➤ Production follow-up process

Production follow-up process follows project activities and reports such activities to top management on a weekly and monthly basis. In the event of any inconsistency between work schedule and activity reports, it warns its internal suppliers and customers and takes required actions.

➤ Training and tracking process

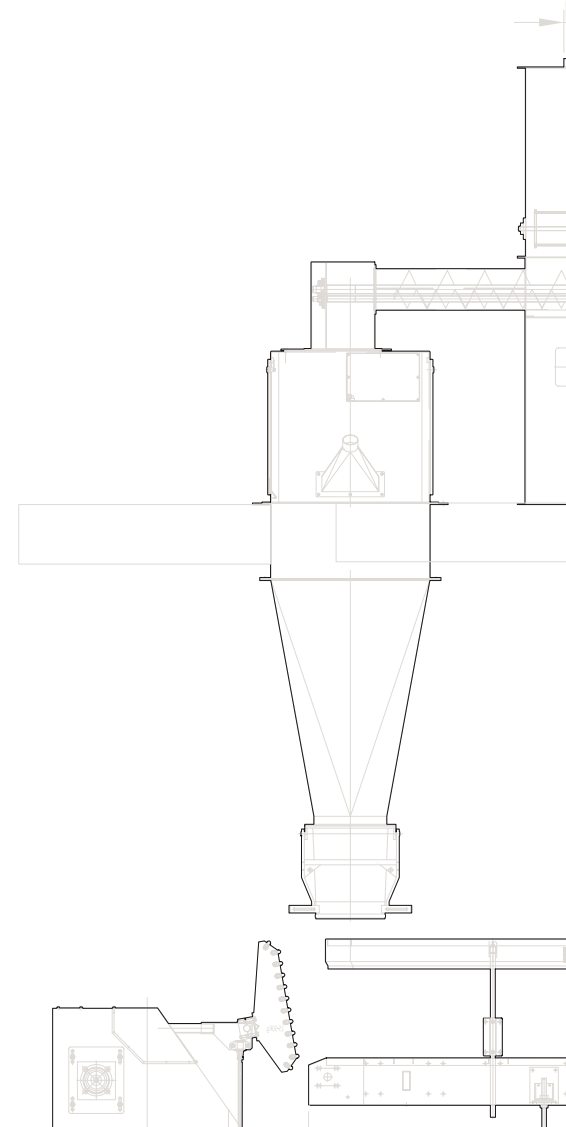
Training and tracking system follows developments and innovations in design programs used and link such developments and innovations with manufacturability and establishes information system.

It analyzes and plans intra-department training requirements and realizes relevant applications.

It tracks conformity of production to the project at every stage of production.

➤ Records and archive

Proper archive records are kept to ensure that customer after sale service is given in the fastest and efficient means.



“services provided”

”

▶ services provided

Primarily project design, superstructure construction, machine production, assembly, commissioning and grain storage systems are realized by Alapala on turnkey basis for you: our valuable customers.

Being one of the two biggest corporations in the sector in the world, Alapala which exports 95% of its products is offering the plants from which it can obtain the highest efficiency with the most economical solutions in many countries over 85 and with hundreds of references.

- ▶ Turnkey Flour Mills
- ▶ Turnkey Semolina Mills
- ▶ Turnkey Maize Mills
- ▶ Turnkey Rice Processing Plants
- ▶ Turnkey Feed Mills
- ▶ Construction of Superstructures
- ▶ Grain Storage Systems and Handling Systems
- ▶ Rice Mills
- ▶ Spare Parts
- ▶ Port Handling Systems

▶ products



CLEANING

- Grain Separator TCSI
- Air Canal KHKA
- Air Recycling Tarar KTHI
- Classifier Destoner TKTD
- Dry Stoner TKTA
- Intensive Wheat Scourer KKSI
- Intensive Dampening Machine TCTS
- Automatic Dampening Machine TCTA
- Tubular Magnet KDMB
- Hammer Mill TCDA
- Trieur Machine TTRA



MILLING

- New Generation Roller Mill Similago II
- Aurora Plansifter AURA
- Arion Purifier AISA
- Roller Mill Machine DAVM
- Quadro Plansifter DPAK
- Purifier DISA
- Bran Finisher DKFS
- Vertical-Vibro Sifter DVSI
- Drum Detacher DTDA
- Impact Detacher DIKA
- Silo Discharger PSKB-PSUB
- Turbo Control Sifter TKSF
- Infestation Destroyer for Flour DVDU
- Vibro Feeder DTTA
- Control Sifter RKES



HANDLING

- Air Jet Plus Filter KFSI
- Cyclone KTSA
- Low Pressure Fan KTMA
- High Pressure Fan DPMA
- Air Lock KHKM
- Ecluse KEKM
- Pneumatic Line Diverter Gate KPKA
- Screw Conveyor KHVA
- Chain Conveyor KZKI
- Sliding Gate MPKA
- Tubular Screw Conveyor KTVA
- Bucket Elevator KBEA



SCALE and PACKAGING

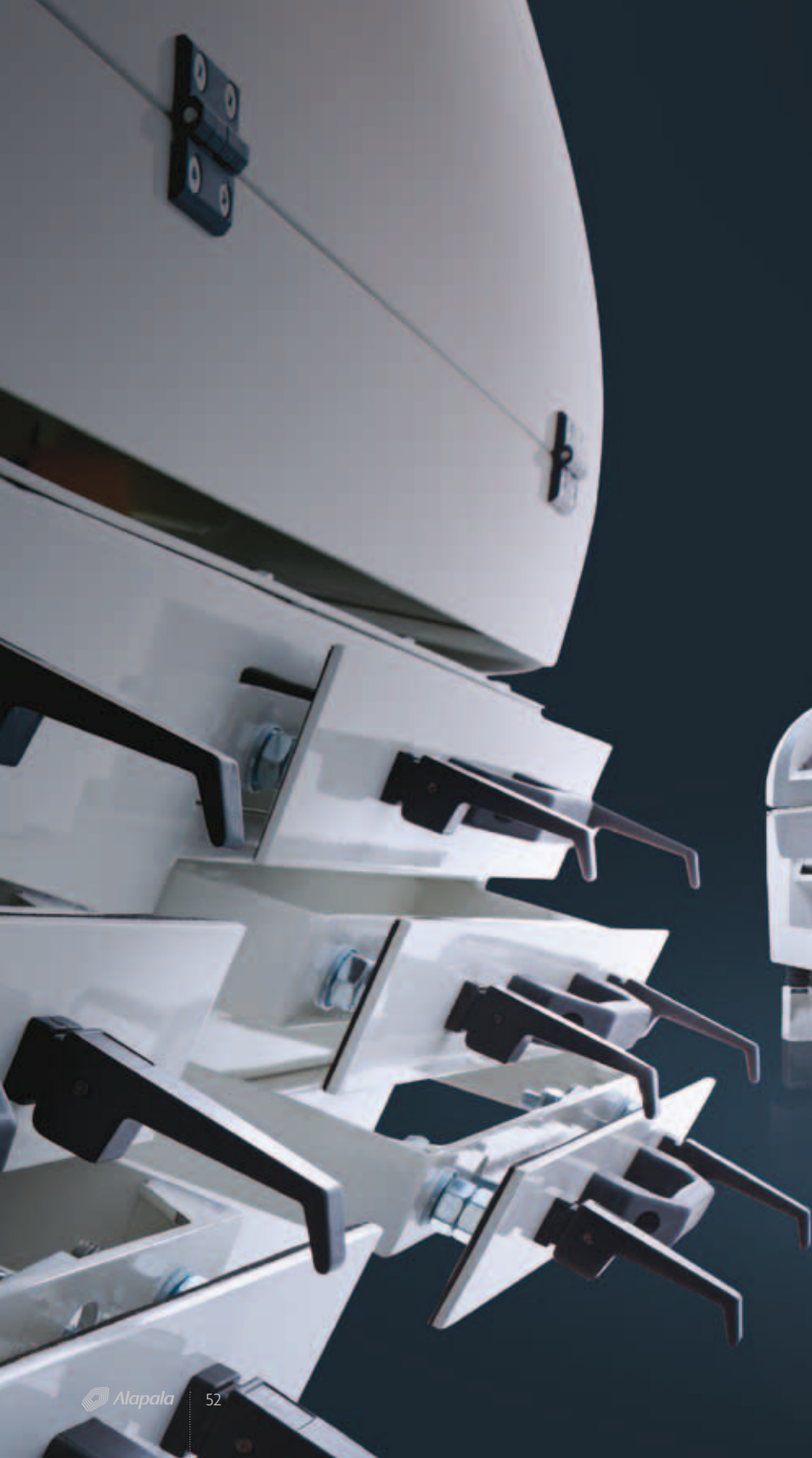
- Packing Machine PTMA
- Flow Balancer TFBI
- Scale KBTA-C
- Extraction Rate Scale DURA, DKRA, KBTA
- Carousel Packing Machine CTMA



FEED MILL

- Molasses Mixer YKMM
- Pellet Press KPPM
- Hammer Mill TCDA
- Enzyme Mixer YKEK
- Pellet Cooler YKPS
- Mixer YYKA

ARION PURIFIER



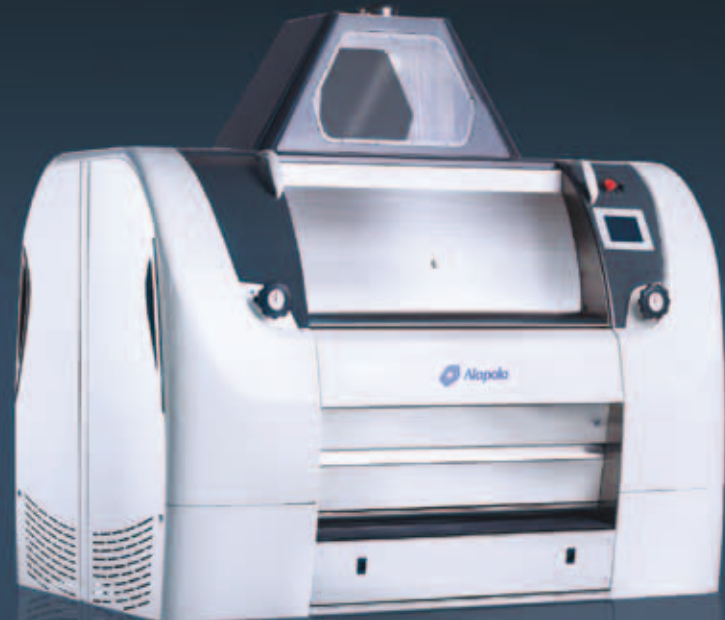
A New Generation the world was waiting for.

Meet the new generation of milling technology. From Alapala.

QUADRO
AURORA PLANSIFTER



SIMILAGO II





Another service of Alapala is, to realize all superstructure constructions, primarily architectural. Electro-mechanic design and steel building constructions within the scope of turnkey-basis projects.

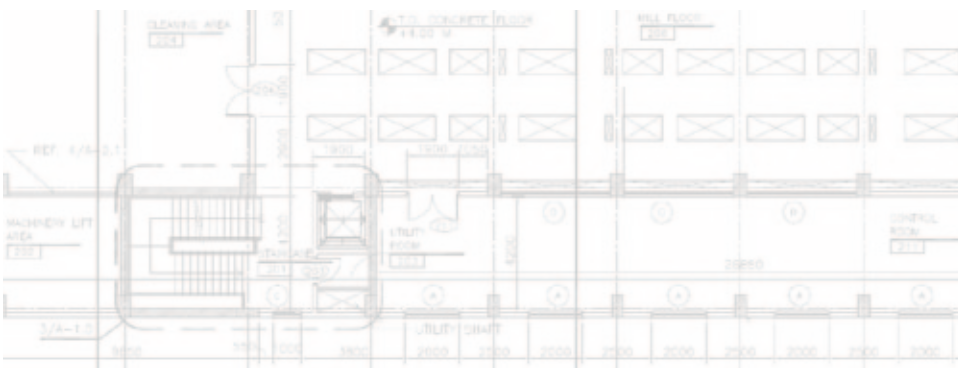
Vision

Exceeding expectations without compromise from quality by creating different designs with the best solution in line with our business policy and taking our place among the leading companies in our sector.



Services

- Architectural, static, electrical and mechanic project design and engineering
- Architectural visualization
- Sustainable ecologic environment friendly design (Leed Certification)
- Economic, optimum field layout solutions and planning in accordance with the process
- Turnkey-basis steel constructions
 - Industrial buildings
 - High buildings
 - Steel production structures
 - Workshops
 - Houses
- General conditions of agreement
 - Technical specifications
 - Length in meters and cost estimate
 - Drawings









“a glance at depart „

DEPART



SPARE PARTS INC.



Depart is a company established with the aim of delivering its customers in Turkey and abroad any spare parts needed in the whole milling industry for facilities with any capacity in the fastest, most economic way without compromising customer satisfaction principles.

All products supplied by the company are the products of the distinguished brands serving the milling technology. Furthermore, it gets product support from ALAPALA Machine producing high-quality, high-performance flour mill machines; grinding systems, cleaning, transport & filtering, weighing & packing machines, feed machines and flour mills for flour factories, to which it is affiliated as a company.

DEPART is constantly developing and growing with its superior technological infrastructure, perfectionist staff and management, quality and customer-oriented approach.



DEPART's field of activity:

- Supply, sales and distribution of mill spare parts.





Technical drawing of a grain silo cross-section showing a conical bottom and a cylindrical upper section. The drawing is overlaid on a background of a cloudy sky. The silo is shown in a perspective view, with a dashed vertical line indicating the centerline. The drawing includes various structural details and dimensions, such as a diameter symbol $\varnothing H$ at the bottom.

“grain storage & handling systems”

”

We are specialized in silo system designs, assembly and plant installation using the latest engineering techniques which enable us to introduce flexible and unique solutions throughout the world.

We carefully monitor all developments in manufacturing and assembly processes of our partners from the beginning to the delivery to ensure high quality.

We provide full engineering service for maintaining safety, efficiency and profit which introduce convenience to you with quality control, treatment, transfer and plant management during storage.





“Alapala in the world”

We aim to provide the best service to our customers around the world with our agents and business partners located in over 30 locations around the world ranging from USA to Indonesia.



“reference projects”

“some of our references”

ALGERIA 

Oran
20.000 MT Steel Silo

Oran
200 Ton / 24 Hrs. Wheat Flour Mill

Oued Tlelat
300 Ton / 24 Hrs. Wheat Flour Mill

Bahklouf Mascara
220 Ton / 24 Hrs. Wheat Flour Mill

Sig
220 Ton / 24 Hrs. Wheat Flour Mill

Tizi Ouzou
180 Ton / 24 Hrs. Wheat Purification Unit

Oran
70 Ton / 24 Hrs. Wheat Flour Mill

Naama
100 Ton / 24 Hrs. Semolina Mill

Tlemcen
70 Ton / 24 Hrs. Wheat Flour Mill

Oran
40 Ton / 24 Hrs. Wheat Flour Mill

Oran
90 Ton / 24 Hrs. Buckwheat

Sig
25 Ton / 24 Hrs. Feed Mill

Tlemcen
Machine & Equipment

Annaba
Machine & Equipment

Annaba
Machine

AUSTRIA 

Gunskirchen
Machine & Equipment

AZERBAIJAN 

Sumgayt
150 Ton / 24 Hrs. Wheat SPM
Short process Mill

BANGLADESH 

300 Ton / 24 Hrs. Wheat Flour Mill



BOSNIA HERZEGOVINA



Sehitluci

200 Ton / 24 Hrs. Wheat Flour Mill

200 Ton / 24 Hrs. Wheat Flour Mill

Machine & Equipment

Prud

150 Ton / 24 Hrs. Wheat Flour Mill

150 Ton / 24 Hrs. Wheat Flour Mill

BRAZIL



Sao Bernardo do Campo

Machine & Equipment

BULGARIA



General Toshevo

100 Ton / 24 Hrs. Wheat Flour Mill

CANADA



200 Ton / 24 Hrs. Wheat Flour Mill

Leithbridge

Machine & Equipment

Regina

Machine & Equipment

DENMARK



Brøndby

Machine & Equipment

Randers

Machine & Equipment

EGYPT



Kalyobia

220 Ton / 24 Hrs. Wheat Flour Mill &

40 Ton / 24 Hrs. Maize Mill

Cairo

200 Ton / 24 Hrs. Wheat Flour Mill

Cairo

150 Ton / 24 Hrs. Wheat Flour Mill &

40 Ton / 24 Hrs. Maize Mill

Cairo

120 Ton / 24 Hrs. Wheat Flour Mill &

40 Ton / 24 Hrs. Maize Mill

Sohag

Machine & Equipment

Cairo

Machine & Equipment

350 Ton / 24 Hrs. Wheat Flour Mill

Cairo

350 Ton/24hrs Wheat Flour Mill

MONGOLIA | 300 Ton / 24 H



FIJI ISLANDS 

Suva
Machine & Equipment

Machine & Equipment

FRANCE 

Beaupreau
330 Ton / 24 Hrs. Wheat Flour Mill

St. Paul en Pareds
150 Ton / 24 Hrs. Wheat Flour Mill

Machine & Equipment

GHANA 

Accra
500 Ton / 24 Hrs. Wheat Flour Mill

D'Arcis –Sur-Aube
Machine & Equipment

GREECE 

Athens
Machine & Equipment

Machine & Equipment

Elfina
Machine & Equipment

Montelimard
Machine & Equipment

Crete
Machine & Equipment

Plechatel
Machine & Equipment

Doi Khalkidos
Machine & Equipment

GEORGIA 

Tbilisi
150 Ton / 24 Hrs. Wheat Flour Mill

Megare
Machine & Equipment

GERMANY 

80 Ton / 24 Hrs. Wheat Flour Mill / Rye Mill

Lagadas
Machine & Equipment

Korinthou
Machine & Equipment



GHANA | 500 MT / 24 H



FRANCE



HOLLAND 

Lelyweg
Machine & Equipment

Rotterdam
Machine & Equipment

HUNGARY 

120 Ton / 24 Hrs. Wheat Flour Mill

Rakoczi U
Machine & Equipment

Rakoozi
Machine & Equipment
150 Ton / 24 Hrs. Wheat Flour Mill

INDIA 

300 Ton / 24 Hrs. Wheat Semolina Mill

Bangalore
Machine & Equipment

Satara, Maharashtra
Machine & Equipments

Bangalore
Machine & Equipments

Neemarana, Rajasthan
Machine & Equipments

INDONESIA 

Jakarta
150 Ton / 24 Hrs. Wheat Flour Mill
500 Ton / 24 Hrs. Wheat Flour Mill

IRAN 

Tehran
300 Ton / 24 Hrs. Wheat Flour Mill

Tehran
300 Ton / 24 Hrs. Wheat Flour Mill

Urumiyah
250 Ton / 24 Hrs. Wheat Flour Mill

Tehran
150 Ton / 24 Hrs. Durum Wheat

Tehran
220 Ton / 24 Hrs. Wheat Flour Mill

Bognourd
150 Ton / 24 Hrs. Wheat Flour Mill

Tebriz
150 Ton / 24 Hrs. Wheat Flour Mill

Tebriz
150 Ton / 24 Hrs. Wheat Flour Mill

Tahrn
130 Ton / 24 Hrs. Wheat Flour Mill

Tphe
130 Ton / 24 Hrs. Wheat Flour Mill

Zahedan
Machine & Equipment

Neka
Machine & Equipment

250 Ton / 24 Hrs. Wheat Flour Mill
250 Ton / 24 Hrs. Wheat Flour Mill
250 Ton / 24 Hrs. Wheat Flour Mill
250 Ton / 24 Hrs. Wheat Flour Mill

Machine & Equipment

Benfsheh
Machine & Equipment

Babylon
250ton/24hrs.
Flour Mill

Zahedan
Machine & Equipment

ITALY 

Urumiye
Machine & Equipment

Montova
150 Ton / 24 Hrs. Wheat Flour Mill

Mashhad
Machine & Equipment

Saluzo
Machine & Equipment

Mashhad
Machine & Equipment

Cremona
Machine & Equipment

Zahidan
Machine & Equipment

Padova
Machine & Equipment

Colestan
Machine & Equipment

Padova
Machine

IRAQ 

Baghdad
Machine & Equipment

Reggio Emilia Italy
Machine & Equipment

JAMAICA 

Kingstown
Machine & Equipment

JORDAN 

Amman
250 Ton / 24 Hrs. Wheat Flour Mill

Amman
Machine & Equipment

Amman
Machine & Equipment

KAZAKHSTAN 

220 Ton / 24 Hrs. Wheat Flour Mill
100.000 Ton Wheat Steel Silo
Machine & Equipment

KYRGYZSTAN 

250 Ton / 24 Hrs. Wheat Flour Mill

KOSOVO 

Kosovo
100 Ton / 24 Hrs. Wheat Flour Mill

LATVIA 

Machine & Equipment

LEBANON 

Beyrouth
120 Ton / 24 Hrs. Wheat Flour Mill

FRANCE



Beyrouth
80 Ton / 24 Hrs. Durum Wheat Flour Mill

LIBYA



600 Ton / 24 Hrs. Wheat Flour Mill

600 Ton / 24 Hrs. Wheat Flour Mill

MACEDONIA



Tetovo

150 Ton / 24 Hrs. Wheat Flour Mill

Tetovo

100 Ton / 24 Hrs. Wheat Flour Mill

Tetovo

Machine & Equipment

Strumica

Machine & Equipment

Skopje

Machine & Equipment

Skopje
Machine & Equipment

Skopje
Mill Renovation

Skopje
Machine & Equipment

Skopje
Machine & Equipment

MARTINIQUE



Le Robet

Machine & Equipment

MOLDOVA



60 Ton / 24 Hrs. Wheat Flour Mill

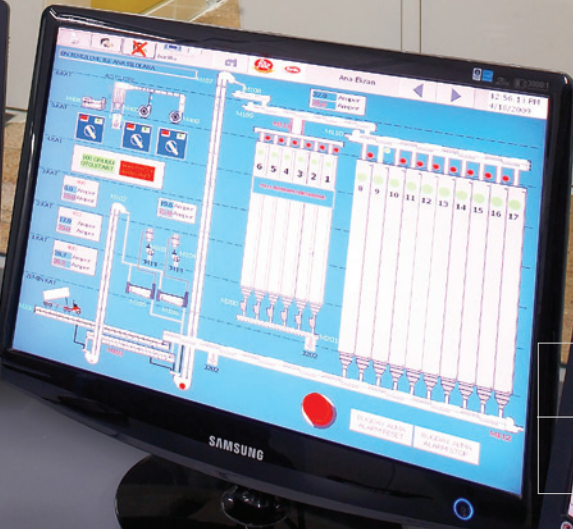
MONTENEGRO



Spuz

100 Ton / 24 Hrs. Wheat Flour Mill

Siroki Put
Machine & Equipment



Danilovgrad
Machine & Equipment

MONGOLIA



Erdenet
150 Ton / 24 Hrs. Wheat Flour Mill
30 Ton / 24 Hrs. Rye Mill
300 Ton / 24 Hrs. Wheat Flour Mill
150 Ton / 24 Hrs. Wheat Flour Mill
120 Ton / 24 Hrs. Wheat Flour Mill
60 Ton / 24 Hrs. Wheat Flour Mill
30 Ton / 24 Hrs. Rye Flour Mill
12.000 MT Wheat Steel Silos
10.200 MT Wheat Steel Silos

MOROCCO



El Jadida
200 Ton / 24 Hrs. Wheat Flour Mill

El Jadida
110 Ton / 24 Hrs. Durum Wheat

Oujda
120 Ton / 24 Hrs. Extension

Meknes
Machine & Equipment

Agadir
Machine & Equipment

Oujda
Machine & Equipment

Marakkech
Machine & Equipment
250 Ton / 24 Hrs. Wheat Flour Mill
120 Ton / 24 Hrs. Wheat Semolina Mill

NIGERIA



350 Ton / 24 Hrs. Wheat Flour Mill
150 Ton / 24 Hrs. Wheat Semolina Mill
300T Wheat Flour Mill
250T Wheat Flour Mill

300 Ton / 24 Hrs. Wheat Flour Mill

ROMANIA




Timisoara
500 Ton / 24 Hrs. Wheat Flour Mill

Braila
300 Ton / 24 Hrs. Wheat Flour Mill



BARILLA
TURKEY

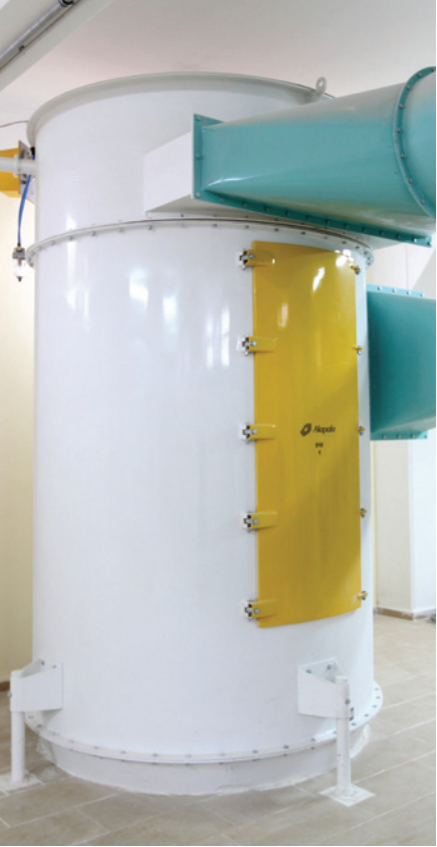




A successful erection, commissioning and handover of a flour mill with a capacity of 150 T/24 hours and a rye mill with a capacity of 30 T/24 hours in Mongolia.

The project also included the supply of the pre-mill engineered steel building and warehouse with grain storage silos having a capacity of 11.000 tons.





TURKEY



Timisoara
140 Ton / 24 Hrs. Wheat Flour Mill

120 Ton / 24 Hrs. Wheat Flour Mill

100 Ton / 24 Hrs. Wheat Flour Mill

Galati
Silo System

Slobozia
Silo Purification System

Teleorman
Machine & Equipment

Jid Hunedora
Machine & Equipment

75 Ton / 24 Hrs. Wheat Flour Mill

180 Ton / 24 Hrs. Flour Mill

REPUBLIC OF SOUTH AFRICA 

Pretoria
Machine & Equipment

Machine & Equipment

Machine & Equipment

RUSSIA 

250 Ton / 24 Hrs. Wheat Flour Mill

SENEGAL 

Dakar
280 Ton / 24 Hrs. Wheat Flour Mill
700 Ton / 24 Hrs. Wheat Flour Mill

SERBIA 

Batajnica – Belgrade
80 Ton / 24 Hrs. Wheat Flour Mill

Machine & Equipment

Despotovac
Machine & Equipment

Beograd
Machine & Equipment

Kulpin
100 Ton / 24 Hrs. Maize Mill

Batajnica
100 Ton / 24 Hrs. Wheat Flour Mill

Despotovac
Machine & Equipment



TURKEY

Kula
250 Ton / 24 Hrs. Wheat Flour Mill

Machine & Equipment

Machine & Equipment

SYRIA

Aleppo
240 Ton / 24 Hrs. Wheat Flour Mill

Hama
Machine & Equipment

SUDAN

700 Ton / 24 Hrs. Wheat Flour Mill
3 x 700 Ton / 24 Hrs. = 2100 Ton / 24 Hrs.
Wheat Flour Mill
250 Ton / 24 Hrs. Wheat Flour Mill
600 Ton / Hrs. Wheat Flour Mill
600 Ton / Hrs. Wheat Flour Mill

SULTANATE OF OMAN

Ruwi
Machine & Equipment

SWAZILAND

Swaziland
Machine & Equipment

Damas
Machine & Equipment

Bolu

300 Ton / 24 Hrs. Semolina Mill

Mardin

300 Ton / 24 Hrs. Wheat Flour Mill

Mardin

320 Ton / 24 Hrs. Wheat Flour Mill

Gaziantep

400 Ton / 24 Hrs. Semolina Mill

**TURKISH REPUBLIC OF
NORTHERN CYPRUS**

Lefkoşa

200 Ton / 24 Hrs. Wheat Flour Mill

TURKMENISTAN

Tecen

170 Ton / 24 Hrs. Wheat Flour Mill

Mari

170 Ton / 24 Hrs. Wheat Flour Mill

Mari

150 Ton / 24 Hrs. Wheat Flour Mill

500 Ton / 24 H

ROMANIA





A successful handover of a semolina mill with a capacity of

400 T/24 Hours
has been handed over by Alapala
in Gaziantep - Turkey

UKRAINE



250 Ton / 24 Hrs. Wheat Flour Mill

Zaporozje

100 Ton / 24 Hrs. Wheat Flour Mill

Kolomia

40 Ton / 24 Hrs. SPM Wheat Flour Mill

Kharkiv

30 Ton / 24 Hrs. SPM Wheat Flour Mill

Kiev

Machine & Equipment

UNITED ARAB EMIRATES



Abu Dhabi

400 Ton / 24 Hrs. Wheat Flour Mill

Sharjah

Turn-Key Project 160 Ton / 24 Hrs. Wheat Flour Mill

Dubai

Machine & Equipment

UNITED STATES OF AMERICA



Ohio

225 Ton / 24 Hrs. Wheat Flour Mill

Machine & Equipment

UZBEKISTAN



300 Ton / 24 Hrs. Wheat Flour Mill

ZAMBIA



Kitwe

120 Ton / 24 Hrs. Maize Mill

Lusaka

100 Ton / 24 Hrs. Wheat Flour Mill

Kitwe

100 Ton / 24 Hrs. Wheat Flour Mill

100 Ton / 24 Hrs. Wheat Flour Mill

TURKEY



Alapala's 400 TPD capacity newest project in

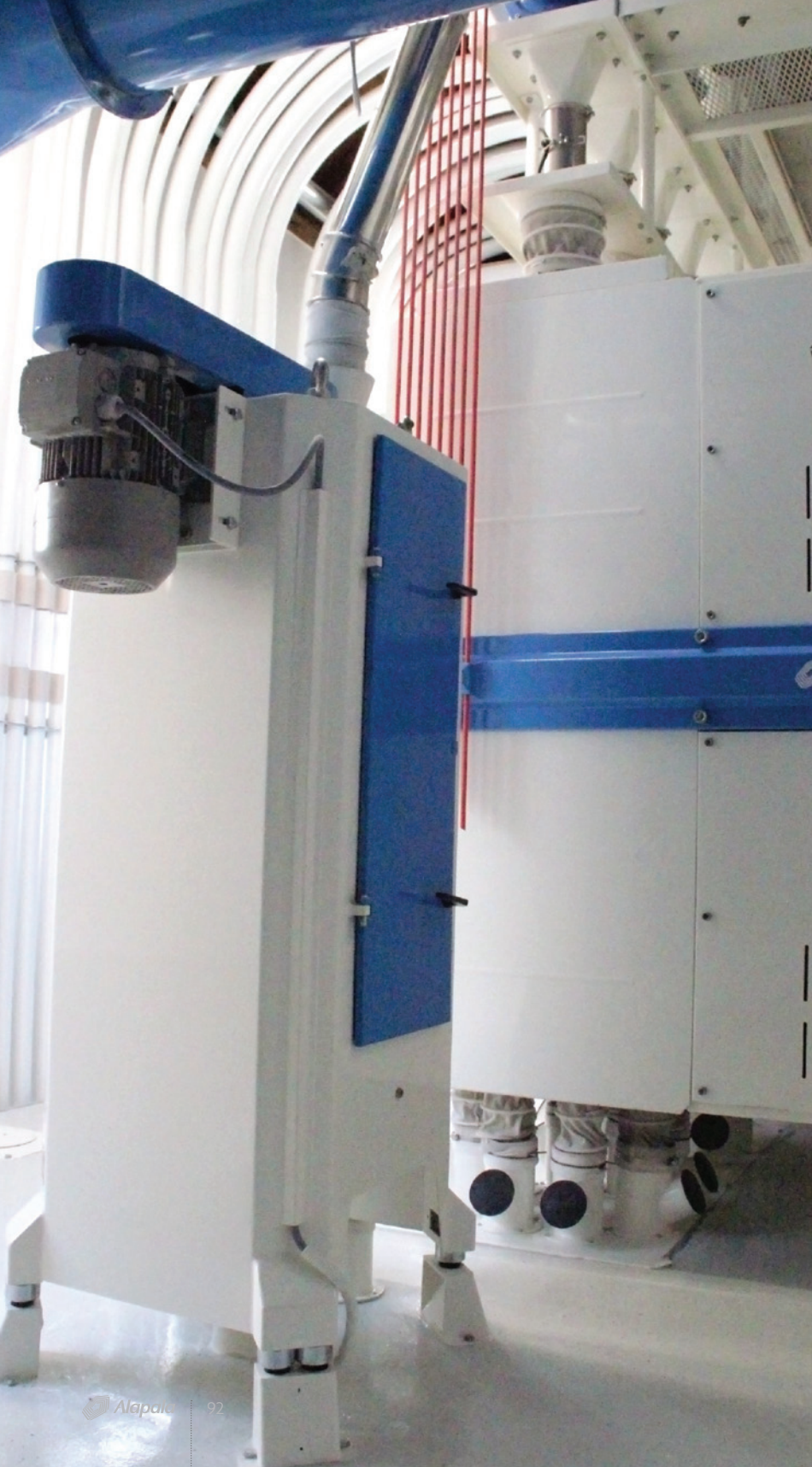
Abu Dhabi is ready to mill.

ALAPALA continues to build technologic mills for worldwide companies to meet the world's flour requirement.





400 TPD soft wheat production
capacity mill in Abu Dhabi,
UAE is commissioned by ALAPALA.





GERMANY

“Alapala in Press „



Hürriyet

Ana sayfa 22 Ağustos 2006 << önceki gün sonraki gün >> Üye Ol, Üye Olmak İçin

Anasayfa
Yazarlar
Gündem
Dünya
Ekonomi
Spor
Teknoloji

Ekonomi

Ekobi
Sadi Özdemir

22 Ağustos 2006

Magazin

Kültür Sanat

Hürriyet Kurumsal

HÜRRIYET EKLER
Cumartesi
Pazar
Seyahat
Marinette
Okur
Temsilciler
Mektuplar

HÜRRIYET ARSIV
kelime giriniz
Ara

Çorumlu marangozun oğlu, 37 ülkeye 100 un fabrikası kurdu

ÇORUM'daki fabrika yapan fabrika' Alapala Makine Sanayi ve Ticaret A.Ş. ABD ve Zambiya dahil 37 ülkede, 200 ton üretim kapasiteli 100 un fabrikasını 'anahtar teslimi' kurmayı başardı. İsmail Alapala, "şimdi hedefimiz, ölçeğimizi büyütmek ve dünyada bir numara olmak" diyor.

ÇORUMLULAR, girişimcilikte başarılarıyla 'senin yaptığını Çorumlu yapamaz' sözünü; 'Çorum'unun yaptığını kimse yapamaz'a dönüştürmeyi başardı. Kimilerinin sermaye birikimini 'tebliği ticaretine' bağladığı Çorum sanayisi artık, dünya genelinde anahtar teslimi fabrika kurabiliyor. Üstelik de bu fabrikalardaki bütün makineleri kendisi üretiyor. Çorum'daki 'fabrika yapan fabrika' Alapala Makine Sanayi ve Ticaret A.Ş., 37 ülkede, asgari 200 ton üretim kapasiteli, 100 tane un fabrikasını 'anahtar teslimi' kurdu ve teslim etti. Alapala Makine Yönetim Kurulu Başkanı İsmail Alapala, "şimdi hedefimiz, ölçeğimizi büyütmek ve dünyada bir numara olmak" diyor. Alapala bu günlere gelmiş öyküsünü anlatmaya şöyle başlıyor: "Babam Mehmet Alapala 1960'lı yıllarda marangozdu. Ancak oyle sıradan bir marangoz değildi. Değirmenlere bizzat alışıp ekipman parçaları yapardı. O yıllarda Çorum'da İngilizler çok modern bir un fabrikası kurduklar. Babam o fabrikanın kuruluşunda başından sonuna kadar görev aldı. Aradan 10 yıl geçti ve bu fabrikanın yenilenmesi gündeme gelince; babam 'ben yapamam' dedi. Alapala ailesi olarak böylece ik anahtar teslimi un fabrikasını kurmuş olduk. Ben de o saralar meslek lisesi öğrencisiyim ve bu fabrikayı kurarken işe çok randım. Sonra da Makine Mühendisi oldum ve şirketimizin başına geçtim."

ÖNCE MAKİNE YAPIP SATTIK: İsmail Alapala, başta orta bir un fabrikasında ne kadar makine varsa üretmeye özen gösterdiklerine belirtiyor ve "1970'lerde Türkiye olarak çok ciddi teknoloji açığımız vardı. O dönemde sanayinin alt yapısı da yoktu. Bir de Anadolu'daysanız çok daha zordu. Ancak biz bir tesisi komple kurduktan sonra çok yüksek makine talebi geldi. Biz de teknolojiyi geliştirmek, fabrikalara daha gelişmiş makineler koymak için çalıştık ve çok sayıda fabrikaya makinelerimiz sattık. Türkiye'deki çok sayıda un fabrikasını ya kurduk ya da yeniledik. Çok hızlı makinelerden hoşlanıyorlardı ve bizim makinelerimiz de çok hızlıydı."



Anahtar teslimi değirmen

YAPTIĞI ARAŞTIRMA GELİŞTİRME YATIRIMLARIYLA ŞİRKETİNİ ÖNEMLİ BİR NOKTAYA TAŞIYAN İSMAIL ALAPALA, BİR DEĞİRMENİ SIFIRDAN ÜRETEN SAYILI FİRMALAR ARASINDA YERİNİ ALDI

İsmail Alapala, 1952 yılında Çorum'da doğdu. İlköğretiminin doğduğu ilde tamamladı. 1972 yılında İstanbul Teknik Üniversitesi Mühendislik Bölümü'nden mezun oldu. Daha o yıllarda, marangoz olan babasının işleriyle ilgilenmeye başladı. 1978 yılında askerlik görevini tamamladıktan sonra, Alapala Makine Sanayi Ticaret A.Ş. Yönetim Kurulu Başkanlığı'na seçildi. Eğitime verdiği desteklerle bilinen İsmail Alapala, 2004 yılında İstanbul'da Alapala Değirmenleri'ni kurdu. Aynı zamanda Endüstriyel İş Kurseyi Başkanlığı görevini de yürütüyor. 1954 yılında değirmencilik sektörüne alışıp makineler üretmek için anahtar teslimi un fabrikası kurdu. Alapala Makine Sanayi Ticaret A.Ş. uzman kadrosuyla, verimli ve yüksek performanslı gelişmiş teknolojilere sahip makine ve tesisler üretiyor. Sistemli çalışan Alapala, TÜV tarafından verilen, DIN EN ISO 9001-2000 kalite güvencesi sertifikasına da sahip.

Teknolojiye yatırım
Alapala bugün değirmencilğin neresinde diye bakıldığında, dünyada değirmencilik pazarına hakim olan gelişmiş ülkelere, anahtar teslimi değirmen kurabilme noktasında olduğunu belirtiyor. Alapala, her dönemde gelişmiş makine ve tesisler üretti. Bugün üretim hatlarında, 1995 yılından bu yana en gelişmiş teknolojileri kullanan Alapala Makine Sanayi Ticaret A.Ş. uzman kadrosuyla, verimli ve yüksek performanslı gelişmiş teknolojilere sahip makine ve tesisler üretiyor.

Alapala Makine Sanayi ve Ticaret A.Ş. kuruluşu



Alapala left many major brands in the Anatolian Brands 2013 Contest organized by Capital and Ekonomist magazines and Türkiye Finans Katılım Bankası to land the second place.

Held in İstanbul Conrad Hotel for the seventh time awarding the locomotives of economy, the ceremony was attended by Türkiye Finans Board of Directors Chairman Mustafa Boydak, Türkiye Finans CEO Derya Gürerk, Capital and Ekonomist Publishing Editor M.Rauf Ateş.

In the ceremony that gathered major players of business world and Anatolian economy Big Businesses - Commerce category award went to Odak Kozmetik from Eskişehir, Agriculture Food category award went to Dardanel from Çanakkale and Manufacturing category award to İnci Akü from Manisa. Alapala Machine was awarded second place after İnci Akü. Board of Directors Member Görkem Alapala received the award, representing Alapala.

Türkiye Finans CEO Derya Gürerk stated that they were supporting Anatolian Brands competition since the previous year and added that they were glad to gather with companies sharing their adventure in becoming brands from all corners of Turkey. Stating that the mission of Türkiye Finans to support real economy and the mission of Anatolian Brands coincide, Gürerk said, "Branding has a major strategic impact. With this in mind, companies underscore investing in their brand within their strategies. Therefore, Turkish companies take large leaps in branding to compete with global brands. Thanks to these leaps, both our brands and our national economy advances in development. Branding assist companies in their capabilities to deal with crises and thus they can be confident to act innovatively and dynamically. With this respect Anatolian Brands Competition provides a great opportunity to companies that want to go global. We provide financial assistance to companies that wish to create their brands. We cooperate with Chambers of Industry and Commerce to this end. We uninterruptedly support companies operating from Anatolia."

The companies in Anatolian Brands Competition were judged by jury members. The jury was composed of Türkiye Finans CEO Derya Gürerk, Capital and Ekonomist Magazines Publishing Editor M. Rauf Ateş, Ekonomist Dergisi Publishing Director Talat Yeşilöğlü, ESIAD General Secretary Mustafa Yaşar Tınar, TOSYÖV Member Hilmi Develi, Koç University Lecturer Barış Tan, Bilgi University Lecturer Fatoş Karahasan, and Prof. Dr. Lerzan Aksoy from Fordham University School Business New York.



Alapala, 2011'e Yeni Ürünlerle Girecek

Alapala Will Enter 2011 With New Products

2011 yılına yeni ürünlerle gireceğini açıklayan Alapala Makina'nın Yönetim Kurulu Üyesi Görkem Alapala, 2014 yılı itibarıyla hedefledikleri cironun 110 milyon doların üzerinde olduğunu söyledi.

Değirmen makineleri sektörünün uluslararası markalarından biri haline gelen Alapala Makine A.Ş., 2010 yılı içerisinde geliştirdiği ve deneme çalışmaları devam eden yeni makinelerini 2011'de satışa çıkaracak.

Dergimize, 2010 yılında yaptıkları çalışmalar ve 2011 hedefleriyle ilgili açıklamalarda bulunan Alapala Grubu Yönetim Kurulu Üyesi Görkem Alapala, 2009-2010 döneminin Alapala için hem rakamsal hem de kurumsal olarak başarılı bir dönem olduğunu vurguladı. Daha önceki yıllarda yakalamış oldukları büyüme oranlarının çok üzerine çıktıklarını belirten Görkem Alapala, "Satış rakamlarımızdaki artış dışında karlılık ve nakit üzerinde odaklanmamış olmamızın olumlu neticelerini aldık" dedi.

ÇALIŞTIĞIMIZ ÜLKE SAYISI 65'İ GEÇTİ
Görkem Alapala, Alapala Makina'nın 2009-2010 dönemindeki çalışmalarını ve yeniliklerini şöyle özetliyor: "Alapala'nın sürekli hedeflerinden biri farklı bölgelerde, coğrafyalarda anahtar teslimi tesisler kurmaktır. 2009-2010 döneminde de 7 yeni ülkede anlaşma yaparak hedefimize ulaştık. Böylece çalıştığımız toplam ülke sayısı 65'i geçti.

Stratejilerimizi oluştururken çok kapsamlı araştırmalar yapıyor, sektörü hem çalıştığımız ülkelerde hem de çalışmayı planladığımız ülkelerde çok yakından takip ediyoruz.

Alapala Makina Board Member Görkem Alapala, who announced that they will enter the year 2011 with new products, added that as of 2014 the endorsement they are aiming at is over 110 million dollars.

Alapala Makine A.Ş. that has become one of the international brands of the milling sector will put their new machines on sale, which they have developed within the year 2010 and the trials of which are continuing. Alapala Group Board Member Görkem Alapala, who explicated to our Journal about their work carried in the year 2010 and about their 2011 goals, emphasized that the 2009-2010 period has been a successful one for Alapala, both quantitatively and also institutionally. Görkem Alapala pointed out that they have far exceeded their growth ratio they achieved in the previous years and also added, "We have received the positive results of our focusing on profitability and ready money besides the increase in our sales figures."

THE COUNTRIES WE ARE IN BUSINESS WITH ARE OVER 65
Görkem Alapala summarizes the 2009 - 2010 period work and innovations of Alapala Makina as follows, "One of the constant goals of Alapala is to establish key-ready plants in different regions and geographies. During the period 2009-2010 we made agreements with 7 new countries and reached our goal. Thus, the total of countries we are in business with is over 65.

When we make our strategies, we carry out extensive research, we follow up the sector very closely both in the countries we have business with and also in countries, with which we are planning to work with.



Alapala is the Export Champion of Çorum

Görkem Alapala received the plaque from Governor Sabri Başköy and TIM Chairman Mehmet Büyükekeşi on behalf of Alapala Makine Sanayi, for gaining the first rank in export in 2012.



Alapala to build four flour mills in Syria

World-Grain.com, May 27, 2011 by World Grain Staff

ISTANBUL, TURKEY — ALAPALA Machine Industry Trade Inc., a leading manufacturer of flour mill projects in Turkey and worldwide, recently won a tender issued by the Syrian government to supply four flour mills to Syria.

The company and its joint venture partner Tefrom Group, a construction company, announced that they have signed a \$75 million contract to build and operate four flour mills with a capacity of 600 tonnes per 24 hours each. The flour mills will be built in the northern cities of Aleppo and Idlib and in the central Syrian city of Homs. They will be fully installed with Alapala's machines including a fully-automated system, electrical

Alapala Makina, sektörde dünyanın iki büyüğünden biri

Orta Anadolu İhracatçı Birlikleri tarafından 2011 yılındaki ihracat başarsız nedeniyle ödüllendirilen Alapala Makina'nın kendi üretim alanında dünyanı iki büyüğünden biri olduğunu Alapala Makina'nın 1954 yılından bugüne 75'ini üzerinde ülkede yüzlerce anahtar teslimi ünitesi, imkân, mısır unu, yem, tahıl depolama sistemleri kurduğunu ve müşterilerine en ekonomik çözümleri sunmaya devam ettiğini belirtti. Alapala Makina, bu gün üretimini %95'ini İhracat eden bir firma olup, Belçika, Fransa, İtalya, Kanada ve ABD gibi gelişmiş sanayi ülkeleri dahil olmak üzere 4 kıtada, 75'in üzerinde ülkede yüzlerce anahtar teslimi fabrika referansına sahiptir.

Konusunda uzman kadrosu, yurtiçinde ki temsilcilikleri, güçlü servis ağı ve yedek parça stoğu ile müşterilerine en iyi satış öncesi ve sonrası hizmeti sunabilen Alapala, en gelişmiş ve leri teknolojiye sahip üretim tesisinde kaliteli ve yüksek performanslı makineler üretmektedir."

Alapala Makina adına Pazarlama Müdür Yardımcısı Nurihan Nisan, Bakan Çayırdayan ile görüşüyor.

GÜNCEL HABER SPOR HABER SERİ İLANLAR RESMİ İLANLAR GAZETE ARŞİVİ TARİHÇE

Güncel Haberler



ALAPALA BÜYÜK İHRACATÇI FİRMALAR ARASINDA
Türkiye Time Dergi Raporu yayımlandı. Bu rapora göre 2011 yılı Türkiye'nin en büyük 1000 ihracatçı firması içinde Çorum ilinde üretim yapan Alapala Makine 882. sıraya çıkarak açıklandı, ...

Tarih: 29.08.2012
Bu haber 664 kez okundu

Türkiye Time Dergi Raporu yayımlandı. Bu rapora göre 2011 yılı Türkiye'nin en büyük 1000 ihracatçı firması içinde Çorum ilinde üretim yapan Alapala Makine 882. sıraya çıkarak açıklandı. Alapala Makine'nin bugün üretimini % 95'ini İhracat ettiği vurgulandı. Alapala Makine'nin aynı üretimini satış ve pazarlamasını yapan Alapala Grubunun bir diğer ihracatçı üyesi Abdül DİG TİCET'in yaptığı ihracat rakamları göre önünde sıralıdır. Alapala 1000 ihracatçı ve en büyük 1000 firması ilere göre dağılımında Çorum'da sadece Alapala Makine listede yer almaktadır. İhtimaller her kapasitede anahtar teslimi ünitesi, yem ve imkân fabrikaları kurarak Alapala Makine bugün üretimini % 95'ini İhracat ediyor. Fransa, Almanya, ABD gibi gelişmiş sanayi ülkeleri dahil olmak üzere 4 kıtada 75'ini üzerinde ülkede yüzlerce referansına sahip olan Alapala Makine yöneticileri, baştan çılasını düjürmeden 2012 yılında da devam ettirecek projeler üzerinde çalışılmaktadır.

Alapala, made in Turkey...
Daha önceki yıllarda yakalamış oldukları büyüme oranlarının çok üzerine çıktıklarını belirten Görkem Alapala, "Satış rakamlarımızdaki artış dışında karlılık ve nakit üzerinde odaklanmamış olmamızın olumlu neticelerini aldık" dedi.



Alapala, made in Turkey...
Daha önceki yıllarda yakalamış oldukları büyüme oranlarının çok üzerine çıktıklarını belirten Görkem Alapala, "Satış rakamlarımızdaki artış dışında karlılık ve nakit üzerinde odaklanmamış olmamızın olumlu neticelerini aldık" dedi.



Röportaj: Nüket Kantarcı
nuket@ekonometri.com.tr

Dünya Devi Bir Türk Şirketi 'Alapala'

TÜRKİYE'NİN 'SEKTÖRÜNDE' LİDER KURULUŞU OLAN ALAPALA MAKİNA DÜNYA PAZARINDA DA ÇÜÇ BÜYÜK ŞİRKETLER ARASINDA YER ALARAK ÜLKEMİZİ BAŞARIYLA TEMSİL EDİYOR. 'ALAPALA GRUBU'NUN ANA ŞİRKETİ OLAN ALAPALA MAKİNA UN, İRMİK, MISIR UNU VE YEM FABRİKALARINDAN MAKİNALARINI ÜRETİYOR VE MONTAJINI DA KENDİLERİ YAPARAK ANAHTAR TESLİMİ OLARAK BU FABRİKALARI TESLİM EDİYOR.

Alapala, 1954 yılında Mehmet Alapala tarafından kurulmuş. İlk olarak iş hayatına an fabrikalarındaki bazı makinelerin imalatıyla başlamış. 1960'ların ortalarında bir fabrikadaki bütün makinelerin üretimine, 1980'lerin ortalarında ise un, irmik ve mısır unu fabrikaları anahtar teslim olarak üretmiş. Aynı yıllarda ihracata başlayarak sektöründe de ilk

ihracatı yapan firma olmuş. Firmanın yöneticilerinin sektörleriyle ilgili eğitim almış olması, şirketin başarısını şimdiden işaret ediyor gibi. Bu örneklerden birisi de Görkem Alapala, Karsus State Üniversitesi'nde deşermercişik eğitimi alan Görkem Alapala, daha sonra sonra "Missouri Park Üniversitesi" İşletme Bölümü'nden mezun olmuş. 2007 yılında Türkiye'ye dönerék, Alapala'nın pazarlama ve satış bölümünde çalışmaya başlamış. Aldığı beşenli eğitimlerinin

yanısıra geniş bir vizyona sahip olan Görkem Alapala, "Aile şirketlerinde çok farklı sorunlarla karşılaşabiliyor. Önemli olan işin bilincinde olmaktır. Alapala ailesi olarak da biz hep bu bilinçle yol aldık" diyor.

Yapılan araştırmalar sonucunda uzmanlar; Türkiye'de aile şirketlerinin çeşitli nedenlerle üçüncü kuşaktan sonra sarsıldığını, bunun sonucunda da şirketlerin yaklaşık olarak 150 yıllık bir

50 EKONOMETRI TIRIMUZ ADUPTOB 2020

Hürriyet GÜNDEM DÜNYA EKONOMİ SPOR YAZARLAR

E-posta

EKONOMİ ENERJİ EMLAK OTOTOYUŞAM TARIM EKO-ANALİZ KOBİ

Türkiye Ekonomisi haberlerini herkesten önce okumak için ekleyin!

Yeni fabrika 2016'da bitecek

3 Aralık 2014

Haberleri Önce Gözet

Paylaş Paylaş 251 Paylaş 18 Tweetler 5

ALAPALA iki yıldır planlamasını yaptığı ve temmuz 2014 tarihinde inşaatına başladığı, sektöründe dünyanın en ileri teknolojilerine sahip yeni fabrikasını 2016 yılının ilk çeyreğinde faaliyete geçirmeyi planlıyor.

Un-irmik ve yem fabrikaları için makina ve otomasyon sistemleri üreten ve anahtar teslimi olarak kurulumunu gerçekleştiren Alapala Makina A.Ş. Yönetim Kurulu Başkan Yardımcısı Görkem Alapala, "Türkiye'yi 2023 hedeflerine ulaştıracak en önemli faktörlerin başında markalı ihracat olduğunu inanıyoruz, markalı ihracatın artışı karlılık ve kaynakların verimli kullanılması açısından büyük önem taşıyor. 34 yıldır ihracat yapan, üretiminin yüzde 95'ini dünyaya pazarlayan, sektöründe en büyük üç markadan biri olmuş ve lider olma vizyonuna yola devam eden bir kuruluş olarak, bu yatırımla hem ülkemizin geleceğine, hem firmamızın tecrübesine hem de ekip arkadaşlarımıza olan güven ve inancı gösteriyoruz" dedi.

<http://www.hurriyet.com.tr/ekonomi/27644783.asp>



НАЦИОНАЛНИ ПРОЕКТИ InvestUkraine YIP PYC ENG STATE AGENCY FOR INVESTMENT AND NATIONAL PROJECTS OF UKRAINE

Home » Turkish Business is Considering the Possibility of Expanding its Activity in Ukraine 10.06.2014

TURKISH BUSINESS IS CONSIDERING THE POSSIBILITY OF EXPANDING ITS ACTIVITY IN UKRAINE

The Agency
National Projects
Investment
International Cooperation
Regional Development
Public Relations
Access to Public Information
Informational materials
Information about Budget
State Purchase
Vacancies

ПІДПИСКА НА НОВИНИ
Email: *
Subscribe
Unsubscribe
SAVE

State Agency for Investment and National Projects of Ukraine held a meeting with the Turkish investors - Alapala Group Company and the Ogilchyn Capital Bank. During the meeting, member of the Board of Directors at Alapala Group, Mehmet Alapala noted that since 2004 his company has launched production in the Zaporizhzhya region, namely the Alapala Mulino flour processing plant with a production capacity of 100 tons per day. Businessman emphasized that Ukraine is among the five largest grain producers of the World, but technologies that are used in the State are rather outdated. Therefore, according to him, in Ukraine losses at the flour processing amount to 30%, and this indicator is much higher than in other states. In addition, 4% of grain are delivered to the production facilities with various damages, while in other countries share of the damaged grains is 8 times less. Mehmet Alapala noted that the Turkish business community perceives new investment opportunities after the last changes that occurred in Ukraine. At the same time he noted that the Turkish companies have been recently facing the VAT compensation problems in Ukraine. Therefore, in order to avoid such situations in the future, it is important to establish effective dialogue with the new Government. In turn, the First Deputy Head of the Agency, Kyrylo Bondar said that the Agency provides investors with a comprehensive assistance for work in Ukraine, and presented the main aspects of the Agency and InvestUkraine's activity. "The Agency can be called a specific investment bank, as we are located between the investors and the State authorities. We help them to find common ground and start working in Ukraine. The Agency is like a free professional consultant that has all the features to help you to work successfully," noticed K. Bondar. Meeting was attended by the First Deputy Head of the Agency, Kyrylo Bondar, General Director of the Alapala Mulino Mills, Member of the Board of Directors at Alapala Group, Mehmet Alapala and President of the Ogilchyn Capital Investment Bank, Ivan Ogilchyn.

Reference:
Alapala Group (Turkey) includes 7 companies, which are actively working at the 4 main sectors: industry, food products, external trade, and construction. Alapala Makina Company (founded in 1954) is the oldest and main enterprise at the Alapala Group. The Company operates in the industrial sector and engaged in the food industry objects construction and production equipment manufacturing, grain crops transportation and processing. Within its sector, Alapala Makina is in the list of two largest enterprises of the World.

"PETROL" Gündemine Dair

Kasım-Aralık 2012 Yıl: 9 Sayı: 56 7 TL KKTC Fiyatı: 10 TL

EKONOMETRİ

Ekonomi, İş Dünyası ve Politika Dergisi



rtv
CERT
NKS
Medy

Yüzyılın Projesi

"Global Yıldız İstanbul"

Özlem Gökçe

Makaleleriyle

Ali Külebi, Anvar Bedel, Arzu Kıyak
Cengiz Yalçın, Ercan Yankın,
Güven Gürel, Levent Erkan, Murat Üke,
Sevil Özkan, Zerrin Tüfekçi

Otomobil Sektörü Önündeki Engeller

Alapala'da "Görkemli Günler" Dönemi

Alapala'da "Görkemli Günler" Dönemi Görkem Alapala

"ALAPALA MAKİNE" DÜNYADA GÜCÜNÜ İSPATLAMIS, SEKTÖRDE HEDEFİNİ HER DAİM BÜYÜK TUTAN VE KALİTESİNİ TECRÜBESİNDEN KAZANAN BÜYÜK BİR MARKA. KURUCUSU MEHMET ALAPALA'NIN UZUN YILLAR ÇALIŞMALARININ ARDINDAN KENDİSİNİN SONRAKİ KUŞAKLARA TESLİM ETTİĞİ "ALAPALA MAKİNE" 1950'Lİ YILLARDA ATTIĞI TEMELLERİNİ 1980'LERE GELİNDİĞİNDE İHRACAT ATILIMLARI YAPARAK SAĞLAMLAŞTIRDI. BAŞARISININ EN GÜZEL SONUCU İSE ARTIK DÜNYA MARKA...

Bu gün, sektörde dünya firmaları arasında Makine, Üçüncü Kurumlar ile yine emin seçile devran ediyor. Alanlara, proje yönetimi, inşaatları, un değirmeni, umu değirmenleri, yları, irmik değirmen depolama sistemleri, yıklama ve boşaltma ekipmanları olan Alapala yükselişinin sırrı kuruluş aşamasında atılan sağlam profesyonel yönetici kadrosu.

Şirketi bugünlerde Türk iş dünyasının gündeminde bu saygın geçmişi değil, Amerika Birleşik Devletleri'ne giren, ailemin yeni kuşak temsilcisi Görkem Alapala'nın şirkete kattığıyla yükselişe geçen Alapala Grubu'nun döneme aldığı yeni bütüme ve yatırım planlarını seçimini sürdürüyor hedefliyor.

24 EKONOMETRİ KASIM-ARALIK 2012

Amerika'da olmak büyük düşünmeni ve her zaman önümü büyük hedefler koymamı sağladı. Şimdi, Alapala olarak da çok büyük hedeflerimiz var, çünkü bugüne kadar yaptıklarımız en büyük referansımız



Alapala Grubu'nun yurt dışındaki şirketleri ise Ukrayna'da bulunan un fabrikası Malino ve İtalya'da 10 yıl önce ortaktarı ile kurduğu ve 23.000.000.000 euro ciroya ulaşan Mill Service S.p.A.

Görkem Alapala, dünya lideri markanın başarı sırlarını, sektörü ve gelişmeyi, 3 kuşak yönetici olmanın güçlerini ve daha pek çok şeyi Türkiye'nin saygın iş dünyası yollarından Ekonometri dergisine anlattı. Alapala'nın anlatılanları şöyle:

"Alapala" bugün bir dünya markası oldu. Bu büyük başarıya temelini ve şirketin dünden bugüne geliştiği noktayı anlatır mısınız?

Alapala, başlangıçta sadece un fabrikalarında kullanılan makineleri üretmekle işe başladı. İlkleyen yıllarda ise un fabrikaları için üretilen tüm makineleri yapmaya başladık. 1950'lerde sektörde yeniydik, 1980'lerde ise çok önemli adımlar atarak adımızıza iş ettirdik. O yıllarda ihracata adımı attık ve bugün yüzde 95 oranında ihracat yapıyoruz. Biz bugünkü noktaya taşıyan da o günlerde atılan sağlam adımlardır. Biz, toplam 8 grupta oluşan bir şirkete. Makinede, un, yama ve irmik fabrikalarını anahtar teslimi şeklinde kuruyoruz. Dünyanın pek çok yerinde fabrikalar kuruyoruz. İtalya ve İsviçre'den sonra dünyada 3. sırada geliyoruz. Aslında saydığımız bu iki ülkeden geride olmamız sadece hacimsel. Kalite olarak onlardan hiçbir farkımız yok. İnnovasyon ve insan kaynağına çok önem veriyoruz.

DÜNYAYA KALİTEMİZİ İSPATLADIK

Grupa 3. kuşak genç patron olmanın zorlukları var mı? Hem kolaylıkları var hem de zorlukları. Biz, belirli bir teknolojiyi akl yapma ve müşteri portfolyo'yu elden kazır bir şirkete geliştirdik. Bu noktaya gelene kadar çok büyük emekler verdiğimiz biliyorum. Aynı çabaya bizim de gözetimimiz ve çitayı yükseltmemiz gerekiyordu. Aynı şekilde 2. kuşağın da yönettiği kuruluşa bir yönü vardı. Biz de 3. kuşak olarak sabırla ve emin adımlarla ilerledik. Ciddi bir ivme yakaladık ve hem satış rakamlarını hem de müşteri portfolyosunu arttırdık. Dünyadaki konumuzun ve teknolojinin yenilikleri geliştirdik. Müşteri memnuniyetini ön planda tutan çalışmalarımıza ürünlerimizdeki kaliteyi tüm dünyaya iletirdik.

FUARLARI KİÇİRMEDİK

Dünyaya açılarken nasıl bir politika izlediniz? Öncelikle sektörün fuarlarını takip ettik. Bu şekilde müşterileri yelpazemizi ciddi anlamda genişlettik. Masa başında yeni anlaşmalar belirleniyor, siparişler alınıyor. Güdükten ülkelerdeki yapıyı inceliyoruz. Ülkedeki fabrika sayısını, ekonomik koşullarını ve daha ilkeyle ilgili pek çok ayrıntıyı araştırıyoruz. Geçmişte de aynı yöntemlerle şirketin temelleri atıldı, fuarlara katılarak fabrikalar araştırılarak şirket bugünkü sağlam konumuna geldi. Biz teknolojiye değil, yatırımcıya çalışıyoruz için tek tek bütün yatırımcıları ziyaret ediyoruz. Genel olarak son üç yıldır da bize gelen talepleri değerlendirilmeye başladık. Yani son üç yıldır taleplerde ciddi bir artış gözleniyor. Hangi ülkelerde un tüketimi artıyor, hangi ülkelerin un

“Glorious Days” Era at Alapala

Görkem Alapala

“ALAPALA MAKİNE” IS A STRONG BRAND, WHICH HAS PROVED ITS STRENGTH TO THE WORLD, ALWAYS AIMS FOR HIGHER IN THE SECTOR AND GAINS ITS QUALITY FROM ITS EXPERIENCE. “ALAPALA MAKİNE”, WHICH IS ENTRUSTED BY ITS FOUNDER MEHMET ALAPALA TO FUTURE GENERATIONS AFTER YEARS OF HARDWORK, HAS STRENGTHENED ITS FOUNDATION LAID IN THE 1950’S, WITH THE EXPORTS REALIZED IN THE 1980’S. THE MOST AMAZING RESULT OF ITS SUCCESS IS THAT THE NAME OF THE COMPANY HAS BECOME A WORLD BRAND TODAY.

Today, Alapala Makine is one of the three leading companies in the world in the market and continues to rise in the safe hands of its third generation directors. The secret key for the success of Alapala, whose areas of activity consist of project management superstructure constructions, flour mills, corn flour mills, feed mills, farina mills, crop storing, handling, loading and unloading equipment, has been the solid steps taken during its foundation phase and its professional management team.

Today, it is not the esteemed background of the company that brings it up to the agenda of Turkish business world. The Alapala Group, which is on the rise with the recent addition of the new representative of the family, Görkem Alapala, who received his education in the United States, is planning to maintain its rise especially with the new expansion and investment plans.

“STRATEGY DEPARTMENT IS ENTRUSTED TO HIM”

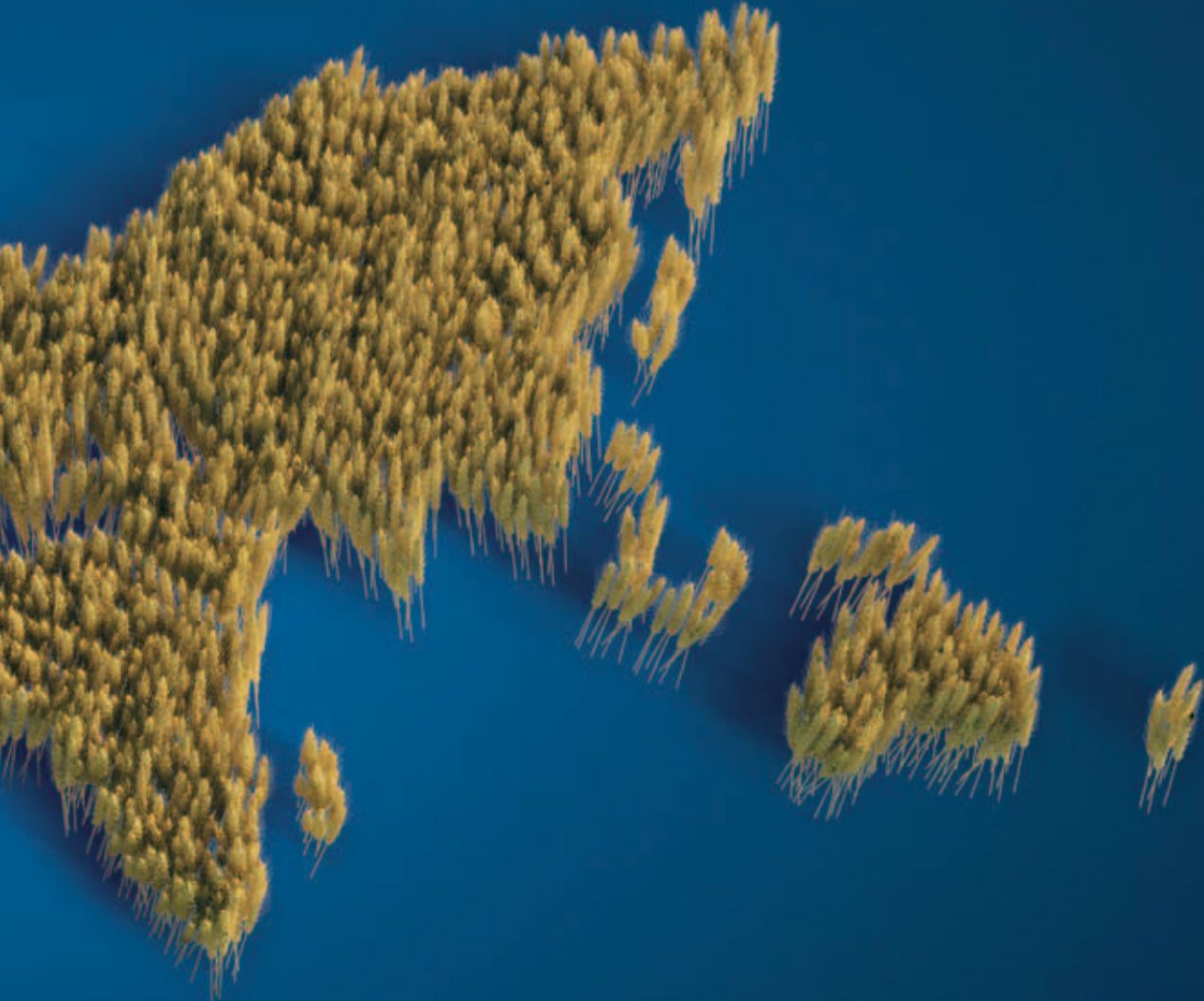
A best example of the new profile of the young businessmen in Turkey, Görkem Alapala worked in various departments of the company group upon his return to the country. Görkem Alapala, who has become the Chief of Strategy of the group, said “A successful boss is a boss, who knows every department of his company”. We are a group, consisting of 8 companies. For the Machinery, we are establishing flour, feed plants, and farina factories as turnkey projects. We are setting up factories all over the world. We come after Italy and Switzerland as the third in the world. Actually, the only reason why we are coming after those two countries is only because of our trade volume. In terms of quality, we are not different from them.” By referring to the department, which he is directing, he perceives the secret of their success “in the strategic thinking and teamwork”.

Alapala Makine, who is amongst the 500 biggest exporters in Turkey, exports 95 percent of its products. Alapala Makine always aims high while adding value to the regional and national economy by creating employment opportunities and with its trade volume.

Your global solution partner in grinding technology

Meet Alapala's experience to combine the future technology with richness of nature.







HEADQUARTERS & FACTORY : ORGANİZE SANAYİ BÖLGESİ, 12.CADDE NO: 15 PK.54 19040 ÇORUM, TURKEY

T: +90 364 254 95 60 PBX F: +90 364 254 92 90

SALES & MARKETING : DÜNYA TİCARET MERKEZİ, A1 BLOK, NO: 15/453 34149 YEŞİLKÖY İSTANBUL, TURKEY

T: +90 212 465 60 40 PBX F: +90 212 465 60 42

www.alapala.com • www.alapalaworld.com

info@alapala.com